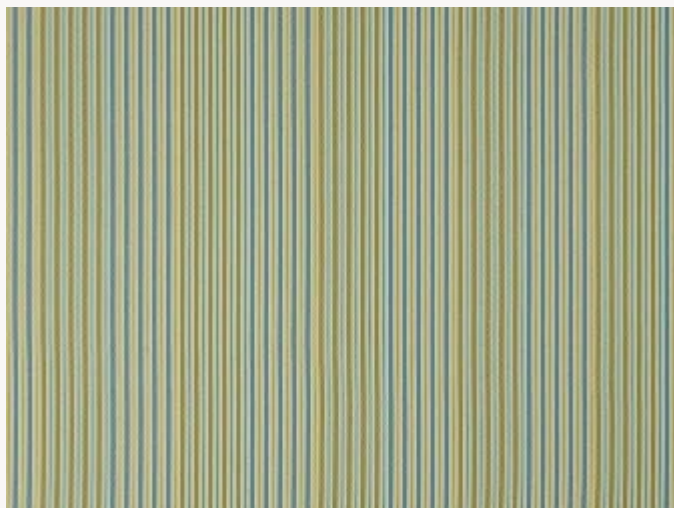




F3482002 CARMEN

This high-performance fabric is developed and woven in the Pierre Frey workshops in the north of France. It offers the best performance for in/outdoor use: stain resistance thanks to a water-repellent treatment with a textile feel and high lightfastness. Adapted from a 19th century pattern book, CARMEN recalls the rich ornaments of the Indian Empire reinterpreted today in a contemporary stripe for indoor or outdoor use.

F3482002 - Turquoise



Raccord : Horizontal 17 cm / 6.69 inch



Laize : 142,00 cm / 55,90 inch

Pierre Frey

| | |
|----------------|-------------------------------------------------------------------------------------------------------------------------------------------------------------------------------|
| PERFORMANCE | Outdoor |
| TYPE | Jacquards |
| COLLABORATION | Maison Caspari |
| USE | Normal use |
| MARTINDALE | 20.000 T |
| COMPOSITION | 100 % Acrylic Dralon |
| SALES UNIT | Available per meter/yard |
| WIDTH | 142 cm / 55,90 inch |
| REPEAT | H: 17 cm - 6,69 inch Free match |
| WEIGHT | 559 gr / ml |
| CARE | |
| CERTIFICATIONS | BS5852 Cigarette test NFPA 260-Class 1 |
| NOTES | High lightfastness, mold-resistant, stain & water repellent Woven in Pierre Frey's workshop in northern France.Living Heritage Mill. |
| INFORMATION | Stripes parallel to selvages For outdoor use, make sure to use appropriate lining materials. Remember to store pads and cushions in a clean, dry place when not in use. |
| BOOK | F997921005MINI F997921005 |

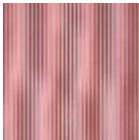
3 Colors



F3482001
Naturel



F3482002
Turquoise



F3482003
Corail