

## F3536002 POSEIDON

This drawing of mermaids illustrates the aquatic world and its divinities with a dreamlike quality. Printed on cotton, POSEIDON is a reproduction of a gouache by the textile designer Irène Rohr from 1945 and kept in the archives of Maison Pierre Frey.



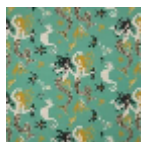
### Pierre Frey

<b>TYPE</b>	Prints
<b>ARTIST</b>	Irène Rohr
<b>USE</b>	RI
<b>COMPOSITION</b>	100 % Cotton
<b>SALES UNIT</b>	Available per meter/yard
<b>WIDTH</b>	132 cm - 51,96 inch
<b>REPEAT</b>	H : 87 cm - 34.25 inch V : 54 cm - 21.25 inch Half drop repeat
<b>WEIGHT</b>	360 gr / ml
<b>CARE</b>	
<b>BOOK</b>	F9979212001

## 2 Colors



F3536001  
ORIGINAL



F3536002  
MENTHE A  
L'EAU