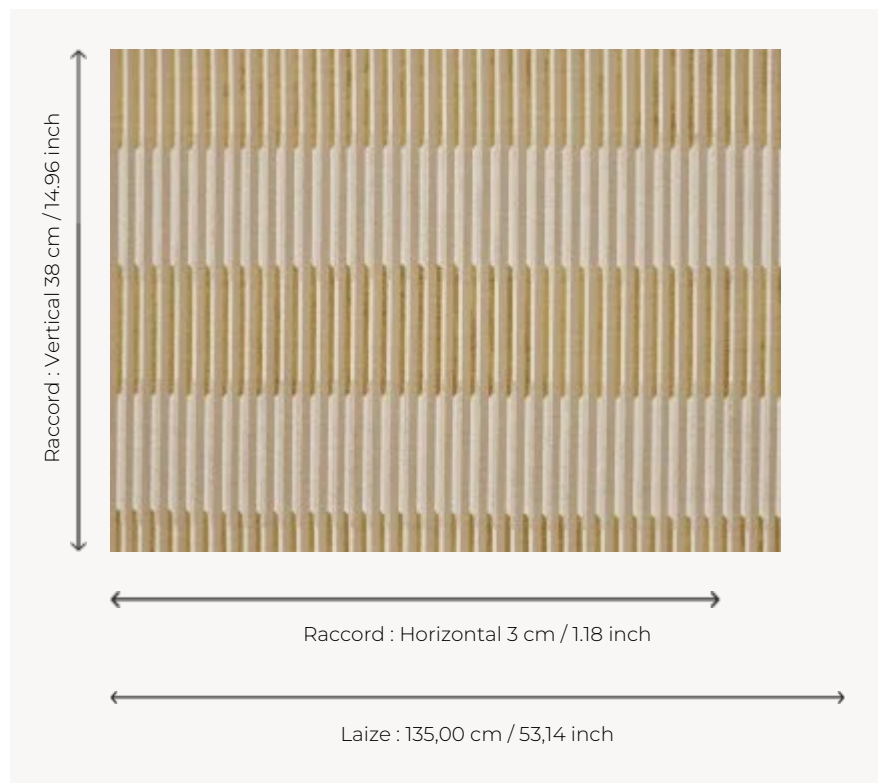



F3551002 VELVET LINES

A recurring theme in Ken Fulk's designs, stripes, initially vertical, are here playing with the illusion of other horizontals, following the color theories of Bauhaus artist Josef Albers. This elegant chiseled velvet plays with alternating matte and shiny effects.

F3551002 - Or



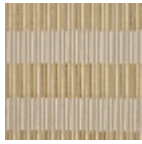
Pierre Frey

PERFORMANCE	Martindale > 25 000 T
TYPE	Epinglé velvets
ARTIST	Ken Fulk
USE	Normal use
MARTINDALE	35.000 T
COMPOSITION	74 % Viscose - 26 % Polyester
SALES UNIT	Available per meter/yard
WIDTH	135 cm / 53,14 inch
REPEAT	H: 3 cm - 1,18 inch V: 38 cm - 14,96 inch Straight repeat
WEIGHT	1309 gr / ml
CARE	
CERTIFICATIONS	NFPA 260-Class 1 CAL TB 117- Pass
INFORMATION	pile 100% viscose Patina with use
BOOK	F9979212008

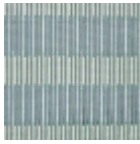
5 Colors



F3551001
Gres



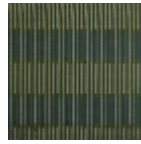
F3551002
Or



F3551003
Celadon



F3551004
Tuile



F3551005
Foret