

F3557001 LES PALMIERS D'ANDREA

These embroidered and colored palm trees dance, follow a movement with a light breeze that takes us to a paradise island of course! Drawing made by Andréa 6 years old. Coordinated with wallpaper FP814 LES PALMIERS D'ANDREA. 10% of the profits are donated to the Fondation de France, to support the project Tous unis contre le virus (All united against the virus) via an action carried out to prevent school dropouts.

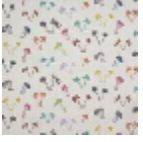
F3557001 - Original



Pierre Frey

TYPE	Embroideries
USE	Curtain
COMPOSITION	90 % Linen - 10 % Viscose
SALES UNIT	Available per meter/yard
WIDTH	128 cm / 50,39 inch
REPEAT	H: 128 cm - 50,39 inch V: 38 cm - 14,96 inch Straight repeat
WEIGHT	345 gr / ml
CARE	

1 Colors



F3557001
Original