



## F3635004 CHENILLE IGOR

Magnificent cotton chenille available in a wide range of muted and contemporary tones, the IGOR CHENILLE is characterized by its modernity and its particularly thick and soft hand.

### F3635004 - Sable

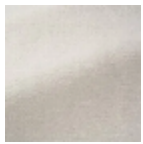


Laize : 134,00 cm / 52,75 inch

### Pierre Frey

<b>PERFORMANCE</b>	Martindale > 25 000 T
<b>TYPE</b>	Chenille - Fibres douces - Plains
<b>USE</b>	Normal use
<b>MARTINDALE</b>	45.000 T
<b>COMPOSITION</b>	84 % Cotton - 7 % Acrylic - 5 % Virgin wool - 2 % Polyamide - 2 % Alpaca
<b>SALES UNIT</b>	Available per meter/yard
<b>WIDTH</b>	134 cm / 52,75 inch
<b>WEIGHT</b>	984 gr / ml
<b>CARE</b>	
<b>CERTIFICATIONS</b>	BS5852 Match test in conjunction with suitable combustion modified foam BS5852 Cigarette test in conjunction with suitable combustion modified foam BS5852 Cigarette & match test in conjunction with suitable combustion modified foam EN1021-1-2 in conjunction with suitable combustion modified foam
<b>INFORMATION</b>	Patina with use pile 100% cotton Reinforced stitching recommended to avoid fraying at seams
<b>BOOK</b>	F9979212012

# 28 Colors



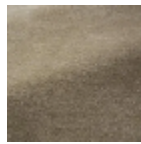
F3635001  
Neige



F3635002  
Coton



F3635003  
Nuage



F3635004  
Sable



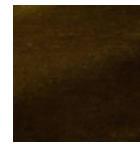
F3635005  
Chamois



F3635006  
Ourson



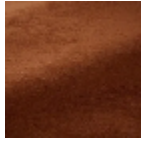
F3635007  
Terre



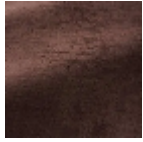
F3635008  
Caramel



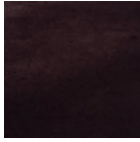
F3635009  
Tangerine



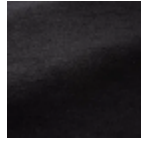
F3635010  
Roux



F3635011  
Clematite



F3635012  
Aubergine



F3635013  
Suie



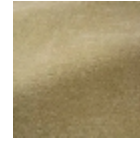
F3635014  
Ardoise



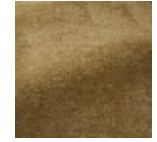
F3635015  
Taupe



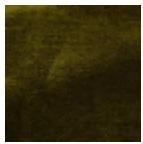
F3635016  
Poudre



F3635017  
Tilleul



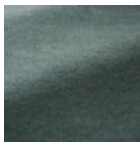
F3635018  
Paille



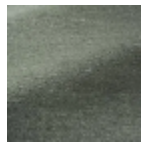
F3635019  
Olive



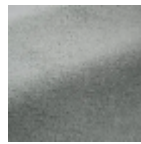
F3635020  
Lichen



F3635021  
Menthe



F3635022  
Celadon



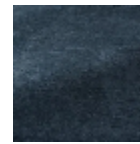
F3635023  
Glacier



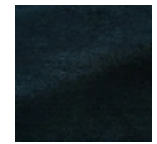
F3635024  
Bleuet



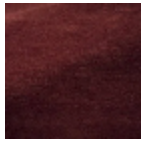
F3635025  
Ciel



F3635026  
Orage



F3635027  
Nuit



F3635028  
Cerise