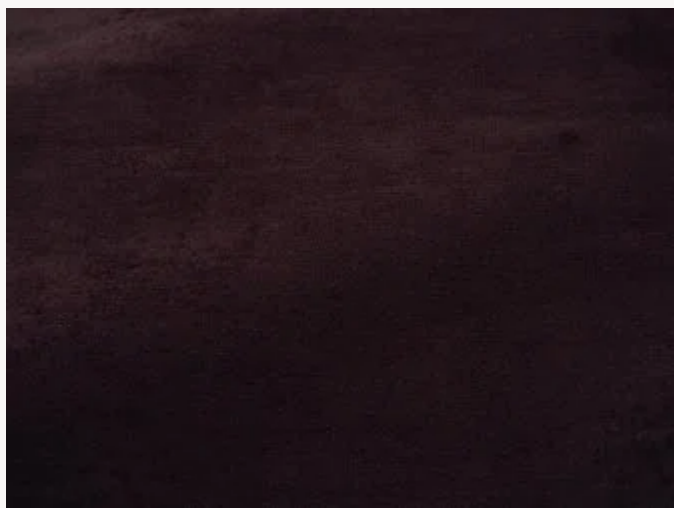




F3635012 CHENILLE IGOR

Magnificent cotton chenille available in a wide range of muted and contemporary tones, the IGOR CHENILLE is characterized by its modernity and its particularly thick and soft hand.

F3635012 - Aubergine

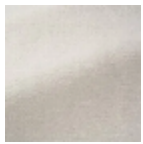


Laize : 134,00 cm / 52,75 inch

Pierre Frey

| | |
|-----------------------|-------------------------------------------------------------------------------------------------------------------------------------------------------------------------------------------------------------------------------------------------------------------------------------------------------------------|
| PERFORMANCE | Martindale > 25 000 T |
| TYPE | Chenille - Fibres douces - Plains |
| USE | Normal use |
| MARTINDALE | 45.000 T |
| COMPOSITION | 84 % Cotton - 7 % Acrylic - 5 % Virgin wool - 2 % Polyamide - 2 % Alpaca |
| SALES UNIT | Available per meter/yard |
| WIDTH | 134 cm / 52,75 inch |
| WEIGHT | 984 gr / ml |
| CARE | |
| CERTIFICATIONS | BS5852 Match test in conjunction with suitable combustion modified foam BS5852 Cigarette test in conjunction with suitable combustion modified foam BS5852 Cigarette & match test in conjunction with suitable combustion modified foam EN1021-1-2 in conjunction with suitable combustion modified foam |
| INFORMATION | Patina with use pile 100% cotton Reinforced stitching recommended to avoid fraying at seams |
| BOOK | F9979212012 |

28 Colors



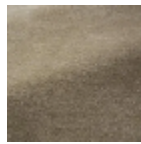
F3635001
Neige



F3635002
Coton



F3635003
Nuage



F3635004
Sable



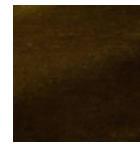
F3635005
Chamois



F3635006
Ourson



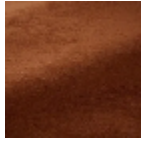
F3635007
Terre



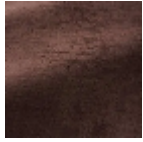
F3635008
Caramel



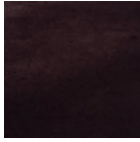
F3635009
Tangerine



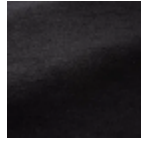
F3635010
Roux



F3635011
Clematite



F3635012
Aubergine



F3635013
Suie



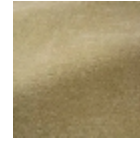
F3635014
Ardoise



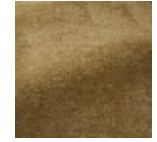
F3635015
Taupe



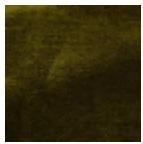
F3635016
Poudre



F3635017
Tilleul



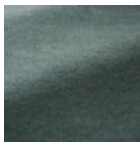
F3635018
Paille



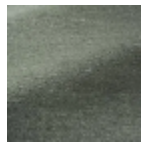
F3635019
Olive



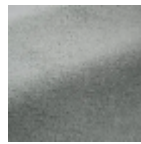
F3635020
Lichen



F3635021
Menthe



F3635022
Celadon



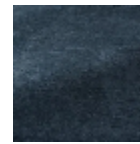
F3635023
Glacier



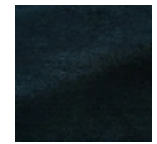
F3635024
Bleuet



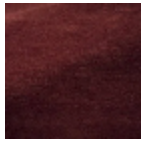
F3635025
Ciel



F3635026
Orage



F3635027
Nuit



F3635028
Cerise