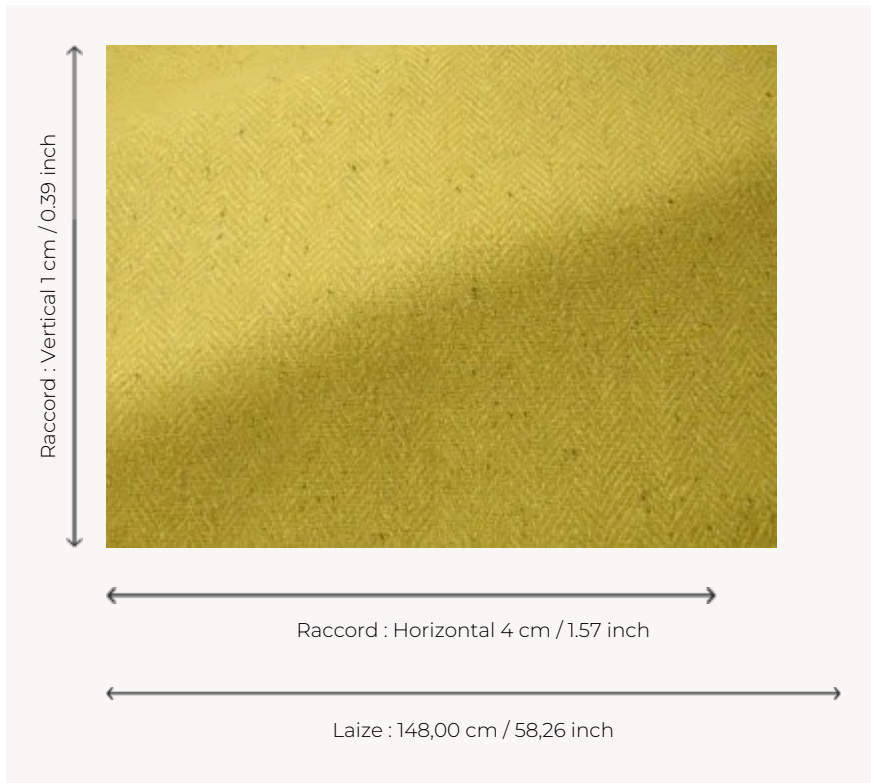


F3640103 FINN

Authentically Irish, this pure new wool tweed is traditionnally woven in Donegal and made distinctive by its fine flecks of bright colors that punctuate its elegant herringbone weaving. If centuries have made the reputation of this heritage technique, the incredible work of yarn spinning and the exclusive color range by Sequana give it a unique character.

F3640103 - Pistache



Pierre Frey

PERFORMANCE	High Rub Test
TYPE	-
USE	Curtain
MARTINDALE	35.000 T
COMPOSITION	100 % Virgin wool
SALES UNIT	Available per meter/yard
WIDTH	148 cm / 58,26 inch
REPEAT	H: 4 cm - 1,57 inch V: 1 cm - 0,39 inch
WEIGHT	710 gr / ml
CARE	
CERTIFICATIONS	BS5852 Cigarette & match test in conjunction with suitable combustion modified foam EN1021-1-2 in conjunction with suitable combustion modified foam NFPA 260-Class 1 CAL TB 117- Pass
INFORMATION	Patina with use Reinforced stitching recommended to avoid fraying at seams Irregular pattern
BOOK	F9979212017

16 Colors



F3640001
Natural



F3640002
Greystone



F3640003
Aqua



F3640004
Paldenim



F3640005
Orange



F3640006
Burntorange



F3640007
Seagreen



F3640008
Peat



F3640009
Prune



F3640010
Blacknatural



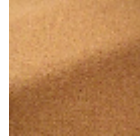
F3640101
Indianrose



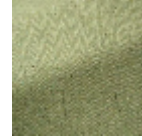
F3640102
Verveine



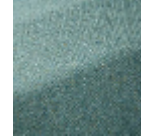
F3640103
Pistache



F3640104
Spice



F3640105
Mint



F3640106
Azur