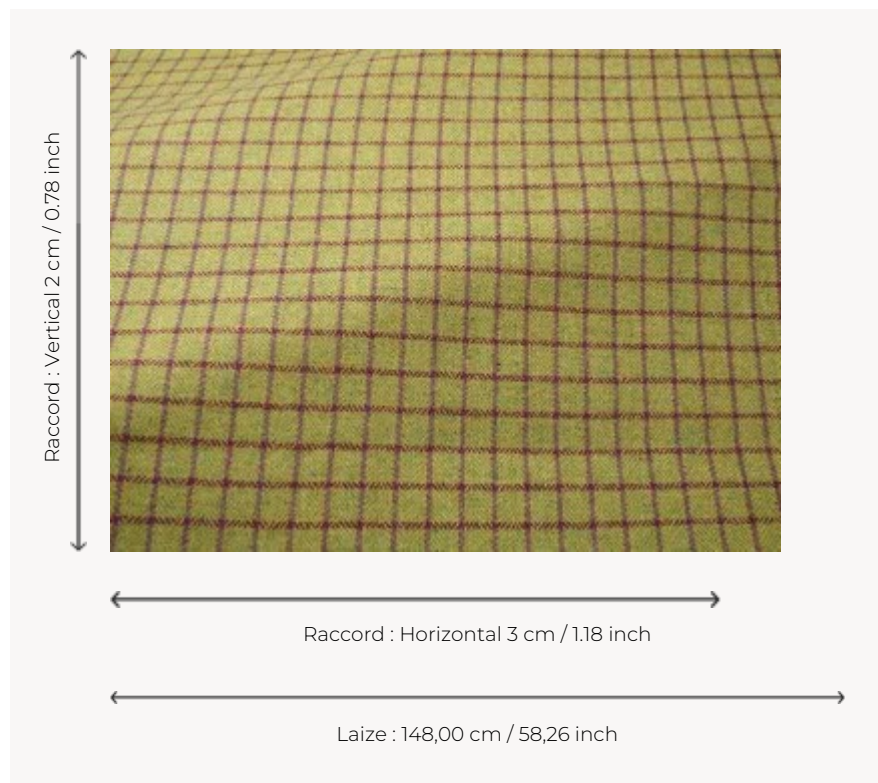



F3644005 GRETA

Traditionally woven in Donegal, Irland, this signature check is distinctive by the fineness of its elegant pure new wool herringbones. The intricate arrangement of warp and weft threads, as well as the exclusive color range by Sequana, highlight this fabric's singularity.

F3644005 - Pistache



Pierre Frey

TYPE	Jacquards - Sequana tweeds
USE	Curtain
MARTINDALE	16.000 T
COMPOSITION	100 % Virgin wool
SALES UNIT	Available per meter/yard
WIDTH	148 cm / 58,26 inch
REPEAT	H: 3 cm - 1,18 inch V: 2 cm - 0,78 inch
WEIGHT	350 gr / ml
CARE	

CERTIFICATIONS	BS5852 Cigarette test in conjunction with suitable combustion modified foam EN1021-1-2 in conjunction with suitable combustion modified foam NFPA 260-Class 1 CAL TB 117- Pass
-----------------------	---

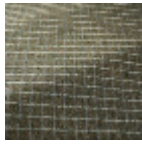
INFORMATION	Patina with use Reinforced stitching recommended to avoid fraying at seams Irregular pattern
--------------------	--

BOOK	F9979212017
-------------	-------------

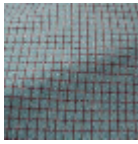
7 Colors



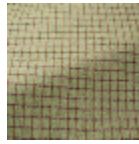
F3644001
Naturalbeige



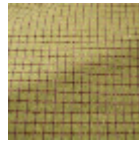
F3644002
Grey



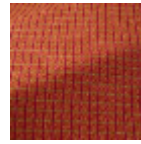
F3644003
Turquoise



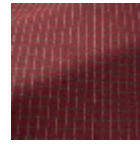
F3644004
Aquagreen



F3644005
Pistache



F3644006
Orangefushia



F3644007
Burgundy