



# F3646007 TARA

This pure new wool semi-plain tweed is traditionally woven in Donegal and is made distinctive by the woolen flecks that punctuate its surface with fine colored contrasts. If time has made the Irish tweed famous, the incredible work of yarn spinning as the exclusive color range by Sequana make this fabric inimitable.

## F3646007 - Fushia



Laize : 148,00 cm / 58,26 inch

## Pierre Frey

PERFORMANCE	High Rub Test
TYPE	Plains - Sequana tweeds
USE	Curtain
MARTINDALE	> 40.000 T
COMPOSITION	100 % Virgin wool
SALES UNIT	Available per meter/yard
WIDTH	148 cm / 58,26 inch
WEIGHT	676 gr / ml
CARE	
CERTIFICATIONS	BS5852 Cigarette & match test in conjunction with suitable combustion modified foam EN1021-1-2 in conjunction with suitable combustion modified foam NFPA 260-Class 1 CAL TB 117- Pass
INFORMATION	Patina with use Reinforced stitching recommended to avoid fraying at seams
BOOK	F9979212017

# 10 Colors



F3646001  
Natural



F3646002  
Pistache



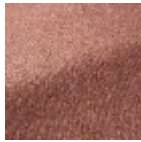
F3646003  
Lichen



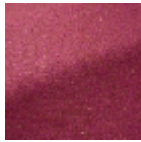
F3646004  
Lime



F3646005  
Orange



F3646006  
Rose



F3646007  
Fushia



F3646008  
Damson



F3646009  
Freystone



F3646010  
Neutral