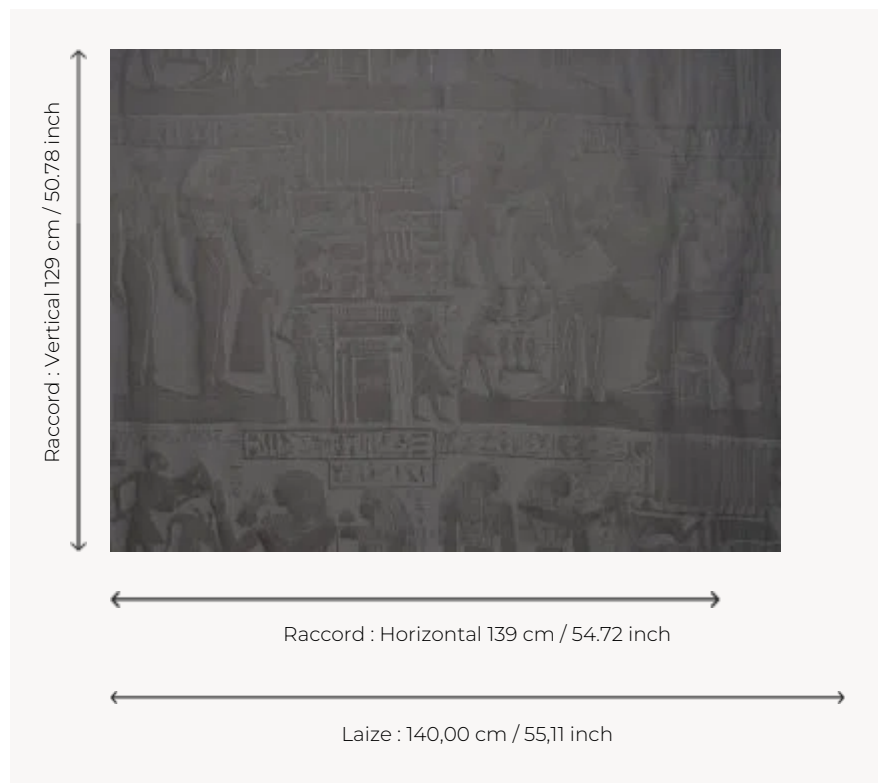


## F3652004 ABKAOU

This precious damask, a bas-relief in silk and linen, depicts the cattle chief Abkaou and his wife receiving offerings. This magnificent scene of life, finely woven, restores all the emotion of the limestone stele exhibited in the Louvre's Department of Egyptian Antiquities.

### F3652004 - Diorite



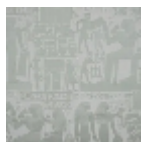
### Pierre Frey

<b>TYPE</b>	-
<b>COLLABORATION</b>	Musée du Louvre
<b>USE</b>	Curtain
<b>COMPOSITION</b>	35 % Cotton - 23 % Linen - 22 % Silk - 20 % Viscose
<b>SALES UNIT</b>	Available per meter/yard
<b>WIDTH</b>	140 cm / 55,11 inch
<b>REPEAT</b>	H: 139 cm - 54,72 inch V: 129 cm - 50,78 inch Straight repeat
<b>WEIGHT</b>	350 gr / ml
<b>CARE</b>	
<b>BOOK</b>	F9979212013

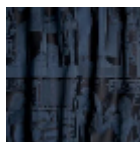
## 4 Colors



F3652001  
Perle



F3652002  
Jade



F3652003  
Nuit



F3652004  
Diorite