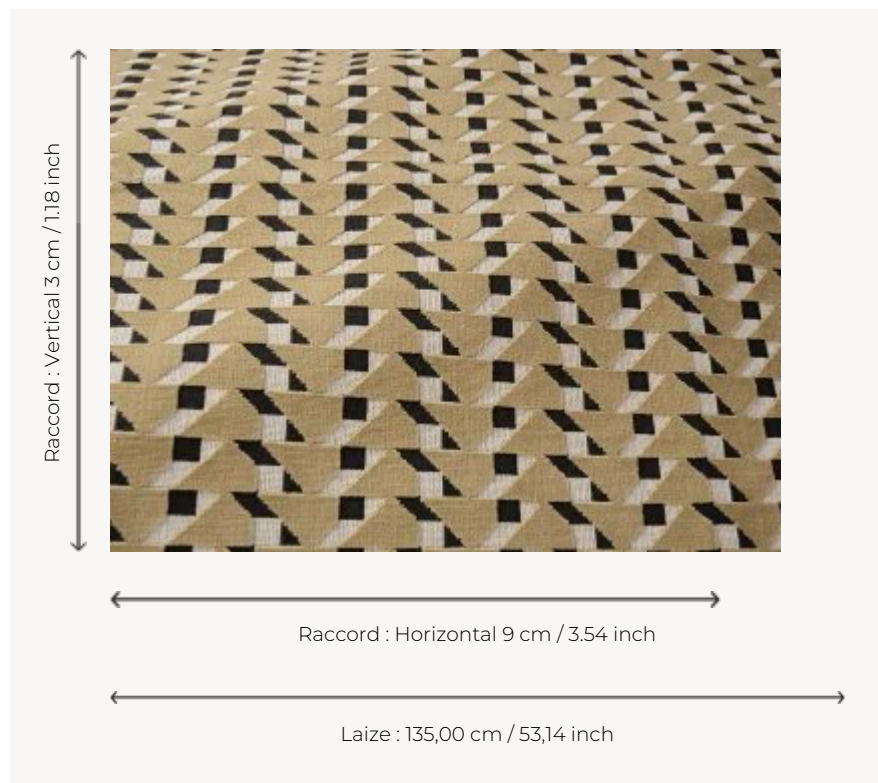


F3669001 DIMITRI

This graphic and playful carved cotton velvet revisits a work by the Russian constructivist artist Lyubov Popova from the early 20th century. Its geometric pattern plays on contrasts of color and black and white, in a particularly dense cotton velvet quality, combining cut and épinglé velvet.

F3669001 - Lin



Pierre Frey

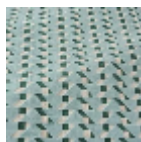
PERFORMANCE	High Rub Test
TYPE	Epinglé velvets
USE	Intensive use
MARTINDALE	>100.000 T
COMPOSITION	86 % Cotton - 14 % Polyester
SALES UNIT	Available per meter/yard
WIDTH	135 cm / 53,14 inch
REPEAT	H: 9 cm - 3,54 inch V: 3 cm - 1,18 inch Straight repeat
WEIGHT	918 gr / ml
CARE	
CERTIFICATIONS	BS5852 Cigarette & match test in conjunction with suitable combustion modified foam
INFORMATION	pile 100% cotton
BOOK	F9979212019

5 Colors



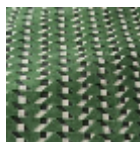
F3669001

Lin



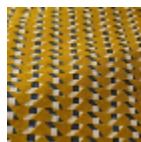
F3669002

Glacier



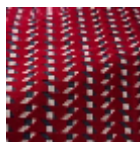
F3669003

Sauge



F3669004

Abeille



F3669005

Grenat