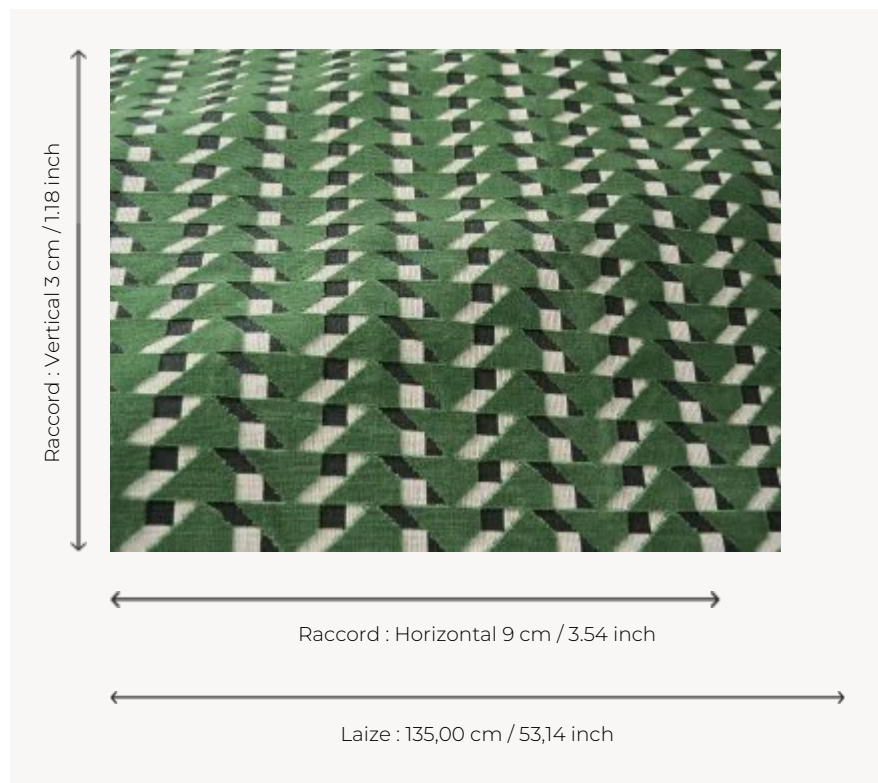


## F3669003 DIMITRI

This graphic and playful carved cotton velvet revisits a work by the Russian constructivist artist Lyubov Popova from the early 20th century. Its geometric pattern plays on contrasts of color and black and white, in a particularly dense cotton velvet quality, combining cut and épinglé velvet.

### F3669003 - Sauge



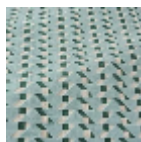
### Pierre Frey

<b>PERFORMANCE</b>	High Rub Test
<b>TYPE</b>	Epinglé velvets
<b>USE</b>	Intensive use
<b>MARTINDALE</b>	>100.000 T
<b>COMPOSITION</b>	86 % Cotton - 14 % Polyester
<b>SALES UNIT</b>	Available per meter/yard
<b>WIDTH</b>	135 cm / 53,14 inch
<b>REPEAT</b>	H: 9 cm - 3,54 inch V: 3 cm - 1,18 inch Straight repeat
<b>WEIGHT</b>	918 gr / ml
<b>CARE</b>	
<b>CERTIFICATIONS</b>	BS5852 Cigarette & match test in conjunction with suitable combustion modified foam
<b>INFORMATION</b>	pile 100% cotton
<b>BOOK</b>	F9979212019

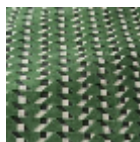
## 5 Colors



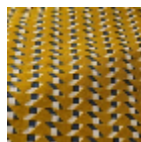
F3669001  
Lin



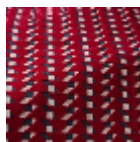
F3669002  
Glacier



F3669003  
Sauge



F3669004  
Abeille



F3669005  
Grenat