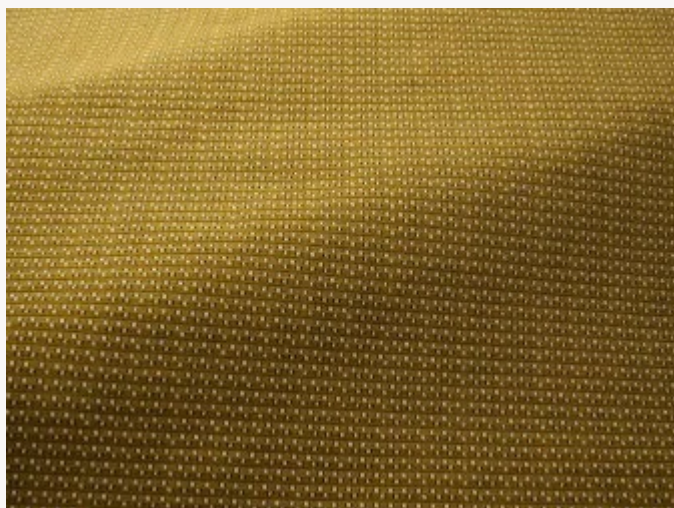




## F3670007 NIKOLAI

NIKOLAI reinterprets an archive of tie designs from the Maison Pierre Frey, in a particularly dense and fine quality of cotton velvet, mixing loop and cut piles. It is available in a wide range of colors, both graphic and timeless.

### F3670007 - Caramel



Laize : 134,00 cm / 52,75 inch

### Pierre Frey

<b>PERFORMANCE</b>	Martindale > 25 000 T
<b>TYPE</b>	Epinglé velvets
<b>USE</b>	Intensive use
<b>MARTINDALE</b>	>100.000 T
<b>COMPOSITION</b>	84 % Cotton - 16 % Polyester
<b>SALES UNIT</b>	Available per meter/yard
<b>WIDTH</b>	134 cm / 52,75 inch
<b>WEIGHT</b>	871 gr / ml
<b>CARE</b>	
<b>CERTIFICATIONS</b>	NFPA 260-Class 1
<b>INFORMATION</b>	pile 100% cotton
<b>BOOK</b>	F9979212019

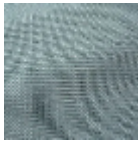
# 10 Colors



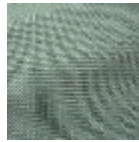
F3670001  
Lin



F3670002  
Aqua



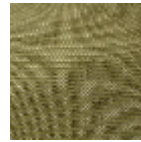
F3670003  
Jeans



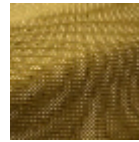
F3670004  
Epicea



F3670005  
Graminee



F3670006  
Avocado



F3670007  
Caramel



F3670008  
Chamotte



F3670009  
Pannacotta



F3670010  
Brique