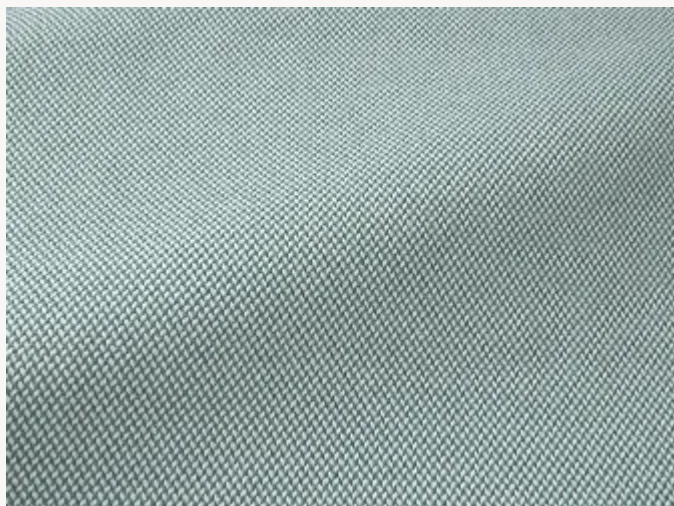


F3702008 HENDAYE

Semi plain In/Outdoor water and stain repellent fabric, HENDAYE is a subtle reminder of linen weaving thanks to a beautiful chiné effect and a play of contrast between a white warp and a colored weft. Its vibrant colors evoke the mineral and solar universe of the South of France. Its supple hand and its solidity make it an essential for seats and curtains.

F3702008 - Tropical



Laize : 138,00 cm / 54,33 inch

Pierre Frey

| | |
|--------------------|---|
| TYPE | Semi plains |
| USE | Intensive use |
| MARTINDALE | >100.000 T |
| COMPOSITION | 100 % Polypropylene |
| SALES UNIT | Available per meter/yard |
| WIDTH | 138 cm / 54,33 inch |
| WEIGHT | 779 gr / ml |
| CARE |  |

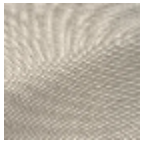
| | |
|-----------------------|---|
| CERTIFICATIONS | BS5852 Cigarette test NFPA 260-Class 1 CAL TB 117- Pass |
|-----------------------|---|

| | |
|--------------|---|
| NOTES | Reversible High lightfastness, mold-resistant, stain & water repellent Washable fabric Indoor-Outdoor fabric Water resistant |
|--------------|---|

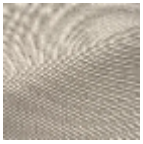
| | |
|--------------------|---|
| INFORMATION | Reinforced stitching recommended to avoid fraying at seams For outdoor use, make sure to use appropriate lining materials. Remember to store pads and cushions in a clean, dry place when not in use. |
|--------------------|---|

| | |
|-------------|-------------|
| BOOK | F9979212022 |
|-------------|-------------|

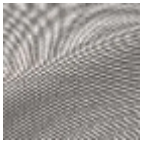
9 Colors



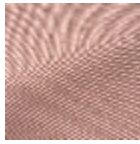
F3702001
Creme



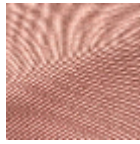
F3702002
Gres



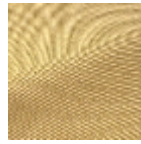
F3702003
Acier



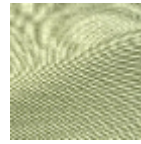
F3702004
Chamallow



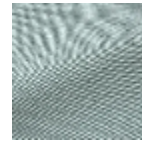
F3702005
Corail



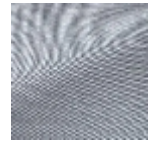
F3702006
Mimosa



F3702007
Kiwi



F3702008
Tropical



F3702009
Ocean