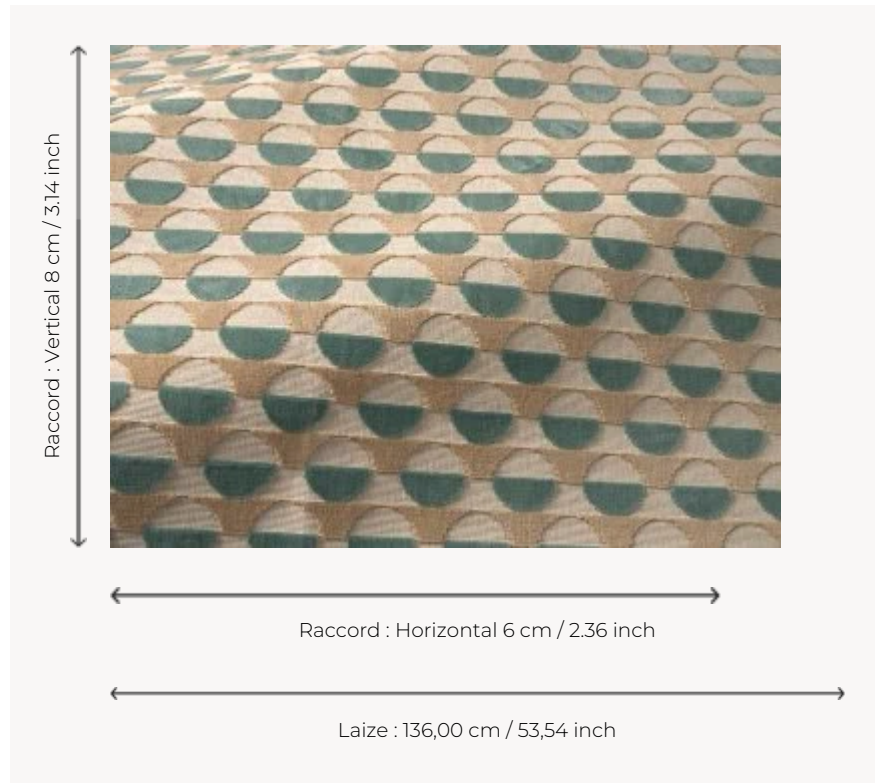


F3705002 MONTREAL

Reinterpreted in elegant cotton velvet, this timeless and modernist design by textile designer Elise Djo-Bourgeois dates from 1927. It oscillates between horizontal stripes and two-tone polka dots. Its mattness, the density of its pile and its traditional weaving on a jacquard loom with perforated cards make it a sober, singular and luxurious fabric.

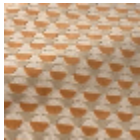
F3705002 - Atoll



Pierre Frey

| | |
|--------------------|---------------------------------------------------------------|
| PERFORMANCE | High Rub Test |
| TYPE | Epinglé velvets |
| ARTIST | Élise Djo-Bourgeois |
| USE | Intensive use |
| MARTINDALE | >100.000 T |
| COMPOSITION | 86 % Cotton - 14 % Polyester |
| SALES UNIT | Available per meter/yard |
| WIDTH | 136 cm / 53,54 inch |
| REPEAT | H: 6 cm - 2,36 inch V: 8 cm - 3,14 inch Straight repeat |
| WEIGHT | 965 gr / ml |
| CARE | |
| INFORMATION | pile 100% cotton |
| BOOK | F9979212023 |

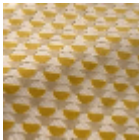
3 Colors



F3705001
Dune



F3705002
Atoll



F3705003
Savane