

F3707003 MARSEILLE

This modernist design, imagined circa 1930 by the textile designer Elise Djo-Bourgeois, is composed in the style of a large tile playing with perspective. It is adjusted in jacquard, woven with elegant chenille wefts in the Pierre Frey workshops in northern France.

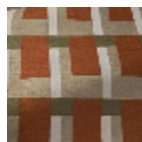
F3707003 - Atlantique



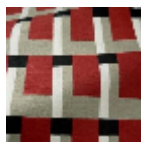
Pierre Frey

TYPE	Jacquards
ARTIST	Élise Djo-Bourgeois
MARTINDALE	18.000 T
COMPOSITION	76 % Viscose - 22 % Cotton - 2 % Polyamide
SALES UNIT	Available per meter/yard
WIDTH	128 cm / 50,39 inch
REPEAT	H: 11 cm - 4,33 inch V: 17 cm - 6,69 inch Straight repeat
WEIGHT	1026 gr / ml
CARE	
NOTES	Woven in Pierre Frey's workshop in northern France. Living Heritage Mill.
INFORMATION	Reinforced stitching recommended to avoid fraying at seams Pocket weave
BOOK	F9979212023

3 Colors



F3707001
Flandres



F3707002
Basque



F3707003
Atlantique