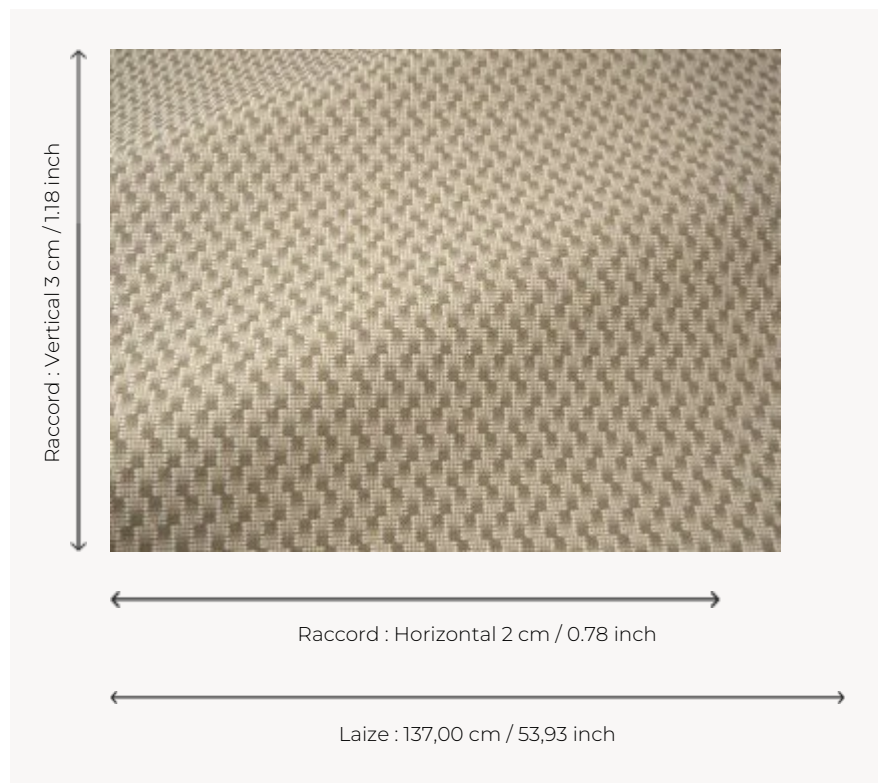


# F3715001 AINHOA

Inspired by a Pierre Frey archive, this In/Outdoor jacquard, water and stain repellent, presents subtle plays of contrasting yarns in a playful graphic pattern. It expresses the characteristic know-how of Pierre Frey's workshops in northern France.

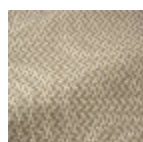
## F3715001 - Sable



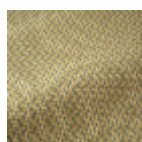
## Pierre Frey

<b>PERFORMANCE</b>	Outdoor
<b>TYPE</b>	Jacquards
<b>USE</b>	Intensive use
<b>MARTINDALE</b>	25.000 T
<b>COMPOSITION</b>	100 % Acrylic
<b>SALES UNIT</b>	Available per meter/yard
<b>WIDTH</b>	137 cm / 53,93 inch
<b>REPEAT</b>	H: 2 cm - 0,78 inch V: 3 cm - 1,18 inch Straight repeat
<b>WEIGHT</b>	674 gr / ml
<b>CARE</b>	
<b>CERTIFICATIONS</b>	NFPA 260-Class 1 CAL TB 117- Pass
<b>NOTES</b>	High lightfastness, mold-resistant, stain & water repellent Washable fabric Indoor-Outdoor fabric Woven in Pierre Frey's workshop in northern France. Living Heritage Mill.
<b>INFORMATION</b>	For outdoor use, make sure to use appropriate lining materials. Remember to store pads and cushions in a clean, dry place when not in use.
<b>BOOK</b>	F9979212022

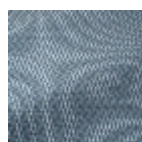
## 7 Colors



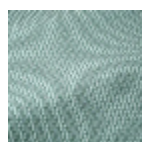
F3715001  
Sable



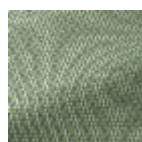
F3715002  
Pissenlit



F3715003  
Atlantique



F3715004  
Lagon



F3715005  
Kiwi



F3715006  
Peche



F3715007  
Praline