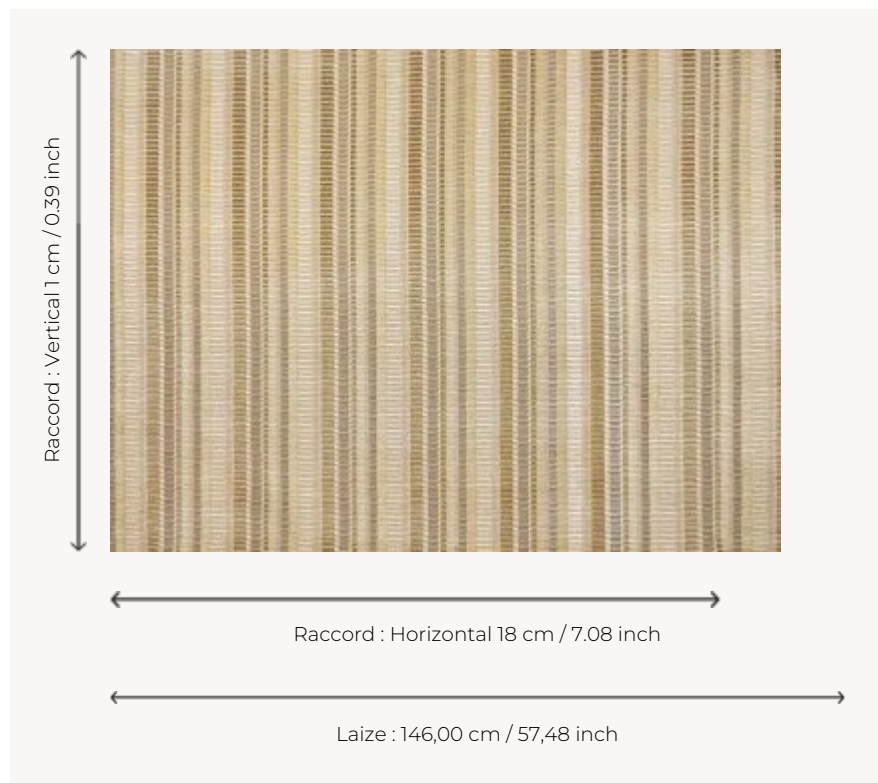


F3760001 EFIA

Through delicate, finely mottled warped stripes , EFIA surprises with the horizontal rhythm and the mastered fantasy of its cut threads. Supple and resistant, this magnificent timeless velvet is as beautiful draped as upholstered.

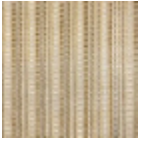
F3760001 - Sable



Pierre Frey

PERFORMANCE	High Rub Test
TYPE	Velvets
USE	Normal use
MARTINDALE	> 40.000 T
COMPOSITION	48 % Cotton - 30 % Viscose - 22 % Polyester
SALES UNIT	Available per meter/yard
WIDTH	146 cm / 57.48 inch
REPEAT	H: 18 cm - 7,08 inch V: 1 cm - 0,39 inch Straight repeat
WEIGHT	554 gr / ml
CARE	
CERTIFICATIONS	NFPA 260-Class 1 CAL TB 117- Pass
INFORMATION	Patina with use
BOOK	F9979212034

1 Colors



F3760001
Sable