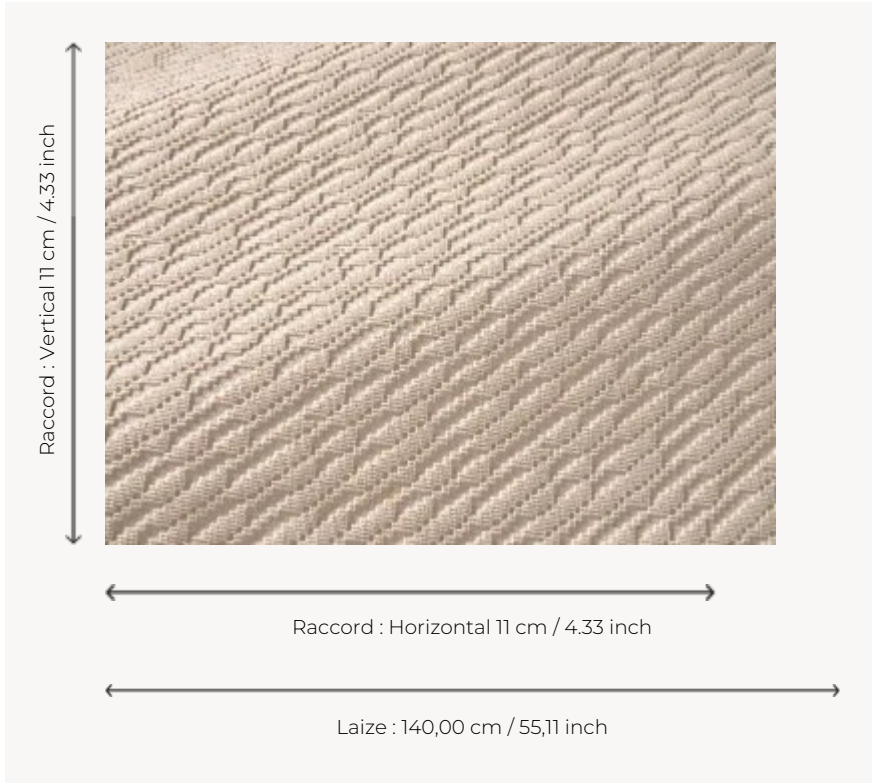


F3763001 ZORA

ZORA is an uncut velvet with a diagonal design from the Maison's archives. It has a charming monochromatic relief created by the contrast of its sophisticated cotton loops and the textured structure of its linen background.

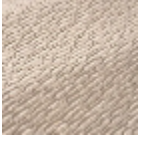
F3763001 - Lait



Pierre Frey

PERFORMANCE	Martindale > 25 000 T
TYPE	Epinglé velvets - Jacquards
USE	Intensive use
MARTINDALE	> 50.000 T
COMPOSITION	65 % Cotton - 23 % Polyester - 12 % Viscose
SALES UNIT	Available per meter/yard
WIDTH	140 cm / 55,11 inch
REPEAT	H: 11 cm - 4,33 inch V: 11 cm - 4,33 inch Straight repeat
WEIGHT	938 gr / ml
CARE	
CERTIFICATIONS	BS5852 Cigarette test NFPA 260-Class 1
BOOK	F9979212034

1 Colors



F3763001

Lait