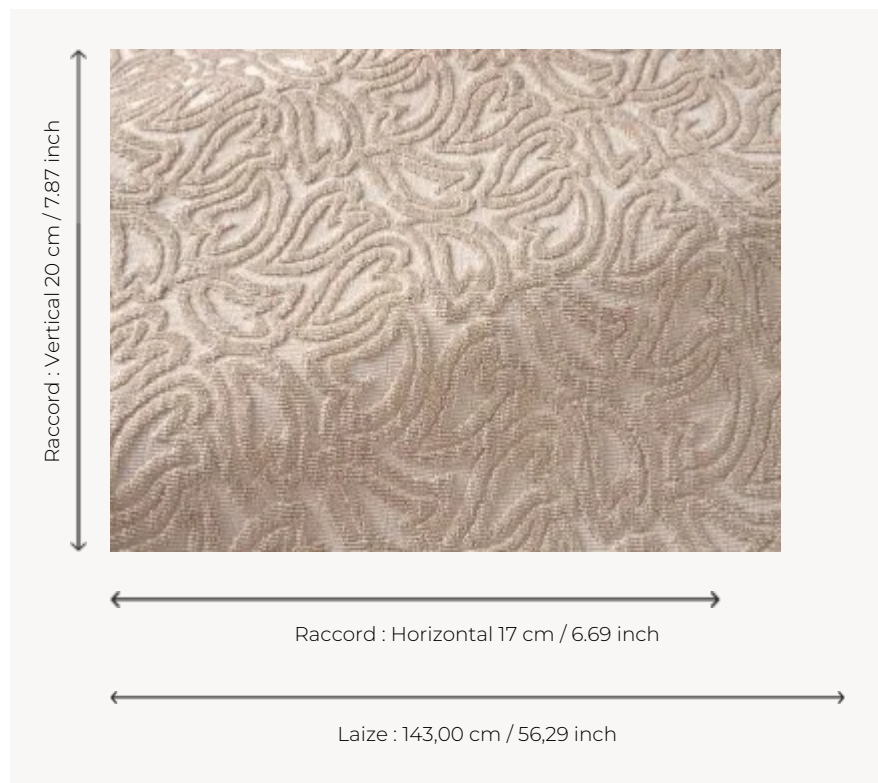


## F3773001 ROMEO

Whether intertwined bindweed leaves or a flight of tender hearts, this romantic design from the Maison's archives is revealed in a charming contrast of textured loops. This loop velvet is ideal for seating.

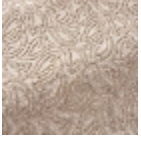
### F3773001 - Creme



### Pierre Frey

<b>PERFORMANCE</b>	Martindale > 25 000 T
<b>TYPE</b>	Jacquards - Velvets
<b>USE</b>	Moderate use
<b>MARTINDALE</b>	> 40.000 T
<b>COMPOSITION</b>	43 % Viscose - 22 % Polyester - 18 % Cotton - 17 % Linen
<b>SALES UNIT</b>	Available per meter/yard
<b>WIDTH</b>	143 cm / 56,29 inch
<b>REPEAT</b>	H: 17 cm - 6,69 inch V: 20 cm - 7,87 inch Straight repeat
<b>WEIGHT</b>	965 gr / ml
<b>CARE</b>	
<b>CERTIFICATIONS</b>	BS5852 Cigarette test BS5852 Cigarette & match test BS5852 Match test NFPA 260-Class 1
<b>INFORMATION</b>	Patina with use
<b>BOOK</b>	F9979212034

# 1 Colors



F3773001  
Creme