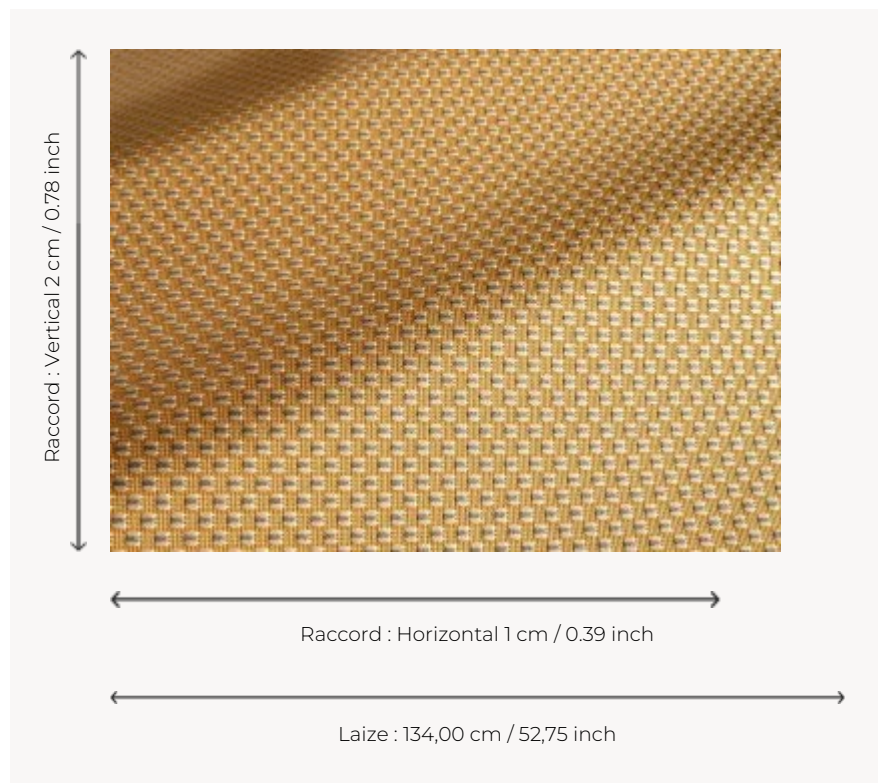


F3822002 MARINA

High-performance In-Outdoor fabric, MARINA is a charming little graphic jacquard, reversible, with multiple thread crossings reminiscent of traditional weaving. It is woven in Pierre Frey's EPV-certified workshops in the north of France, experts in Europe in the weaving of lightfast, stain-resistant textiles.

F3822002 - Soleil



Pierre Frey

| | |
|-----------------------|---|
| PERFORMANCE | Outdoor |
| TYPE | Jacquards |
| USE | Moderate use |
| MARTINDALE | < 20.000 T |
| COMPOSITION | 100 % Acrylic |
| SALES UNIT | Available per meter/yard |
| WIDTH | 134 cm / 52,75 inch |
| REPEAT | H: 1 cm - 0,39 inch V: 2 cm - 0,78 inch |
| WEIGHT | 643 gr / ml |
| CARE | |
| CERTIFICATIONS | BS5852 Cigarette test NFPA 260-Class 1 CAL TB 117- Pass |
| NOTES | Reversible High lightfastness, mold-resistant, stain & water repellent Washable fabric Made in France (EPV Living Heritage Mill) Indoor-Outdoor fabric Woven in Pierre Frey's workshop in northern France. Living Heritage Mill. |
| INFORMATION | Reinforced stitching recommended to avoid fraying at seams For outdoor use, make sure to use appropriate lining materials. Remember to store pads and cushions in a clean, dry place when not in use. |
| BOOK | F9979202305 |

9 Colors



F3822001
Ble



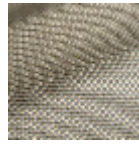
F3822002
Soleil



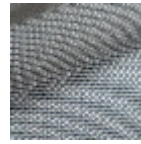
F3822003
Dragee



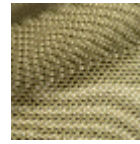
F3822004
Fleur



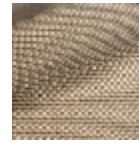
F3822005
Orage



F3822006
Ocean



F3822007
Olive



F3822008
Grege



F3822009
Ocre