



F3829001 ISCHIA

High-performance In-Outdoor fabric, ISCHIA is a beautiful jacquard of foliage inspired by paper cut-outs playing on colour contrasts in dense weaves, with a look and feel reminiscent of cotton satin. It is woven in Pierre Frey's workshops in the north of France, which have the EPV label and are experts in Europe in the weaving of lightfast, stain-resistant textiles.

F3829001 - Sable



Pierre Frey

PERFORMANCE	Outdoor
TYPE	Jacquards
USE	Moderate use
MARTINDALE	< 30.000 T
COMPOSITION	100 % Acrylic
SALES UNIT	Available per meter/yard
WIDTH	136 cm / 53,54 inch
REPEAT	H: 34 cm - 13,38 inch V: 73 cm - 28,74 inch Straight repeat
WEIGHT	741 gr / ml

CARE	
-------------	--

CERTIFICATIONS	BS5852 Cigarette test NFPA 260-Class 1 CAL TB 117- Pass
-----------------------	---

NOTES	High lightfastness, mold-resistant, stain & water repellent Washable fabric Made in France (EPV Living Heritage Mill) Indoor-Outdoor fabric Woven in Pierre Frey's workshop in northern France.Living Heritage Mill.
--------------	--

INFORMATION	Reinforced stitching recommended to avoid fraying at seams For outdoor use, make sure to use appropriate lining materials. Remember to store pads and cushions in a clean, dry place when not in use.
--------------------	---

BOOK	F9979202305
-------------	-------------

6 Colors



F3829001
Sable



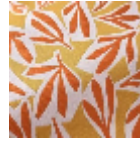
F3829002
Celadon



F3829003
Lapis lazuli



F3829004
Olive



F3829005
Solaire



F3829006
Chataigne