

# F3862001 KONYA

This magnificent, wide bayadère stripe is reminiscent of kilim fabrics and shows a strong taste for craftsmanship. This fabric is coordinated with jacquard KIRU F3863.

## F3862001 - Sous-bois



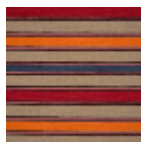
## Pierre Frey

<b>PERFORMANCE</b>	Martindale > 25 000 T
<b>TYPE</b>	Jacquards
<b>USE</b>	Intensive use
<b>MARTINDALE</b>	>100.000 T
<b>COMPOSITION</b>	30 % Cotton - 29 % Wool - 29 % Acrylic - 12 % Polyester
<b>SALES UNIT</b>	Available per meter/yard
<b>WIDTH</b>	130 cm / 51,18 inch
<b>REPEAT</b>	V: 56 cm - 22,04 inch
<b>WEIGHT</b>	780 gr / ml
<b>CARE</b>	
<b>CERTIFICATIONS</b>	BS5852 Cigarette test EN1021-1-2 in conjunction with suitable combustion modified foam NFPA 260-Class 1 CAL TB 117- Pass
<b>INFORMATION</b>	Stripes perpendicular to selvages
<b>BOOK</b>	F9979202302

## 2 Colors



F3862001  
Sous-bois



F3862002  
Epice