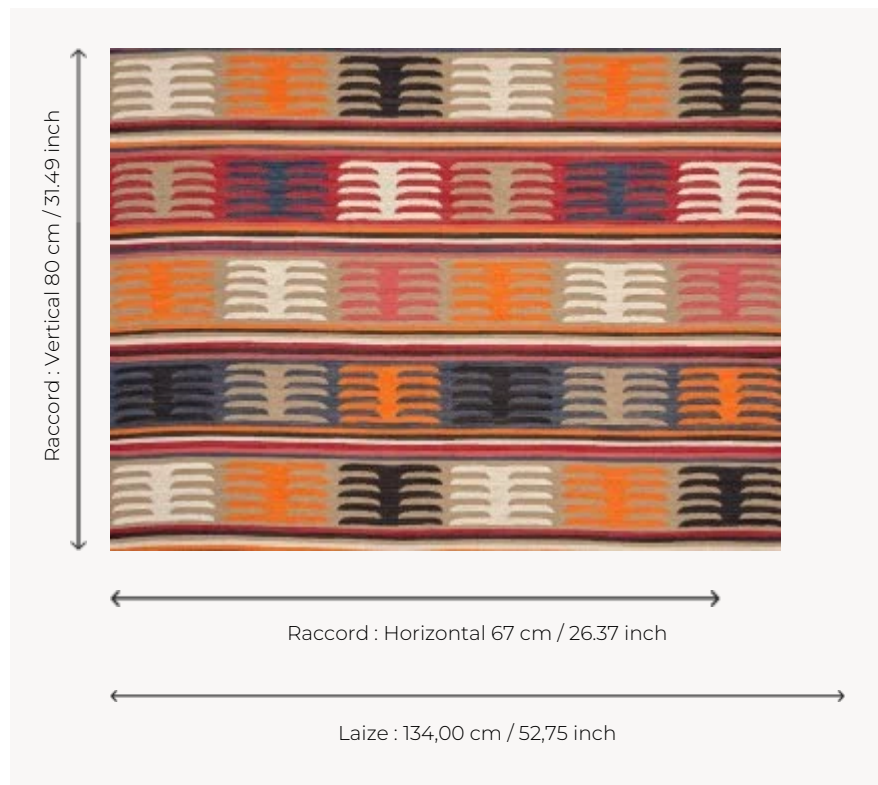


F3863002 KIRU

This large, graphic and colorful jacquard in bayadère stripes evokes kilims and shows a strong taste for craftsmanship. This fabric is coordinated with KONYA F3862.

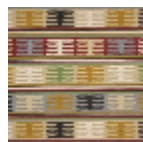
F3863002 - Epice



Pierre Frey

TYPE	Jacquards
USE	Moderate use
MARTINDALE	8.000 T
COMPOSITION	32 % Acrylic - 31 % Wool - 23 % Cotton - 14 % Polyester
SALES UNIT	Available per meter/yard
WIDTH	134 cm / 52,75 inch
REPEAT	H: 67 cm - 26,37 inch V: 80 cm - 31,49 inch Straight repeat
WEIGHT	1286 gr / ml
CARE	
CERTIFICATIONS	BS5852 Cigarette test BS5852 Cigarette & match test BS5852 Match test EN1021-1-2 in conjunction with suitable combustion modified foam NFPA 260-Class 1 CAL TB 117- Pass
BOOK	F9979202302

2 Colors



F3863001
Sous-bois



F3863002
Epice