



F3928004 TOUNDRA

Extraordinary thick, stretchy wool velvet, TOUNDRA surprises with its roundness and soft, plush hand.

F3928004 - AMBRE



Laize : 128,00 cm / 50,39 inch

Pierre Frey

| | |
|-----------------------|---|
| PERFORMANCE | Martindale > 25 000 T |
| TYPE | Fibres douces - Plains - Velvets |
| USE | Normal use |
| MARTINDALE | 30.000 T |
| COMPOSITION | 61 % Wool - 32 % Polyester - 7 % Elastane |
| SALES UNIT | Available per meter/yard |
| WIDTH | 128 cm / 50,39 inch |
| WEIGHT | 1196 gr / ml |
| CARE | |
| CERTIFICATIONS | BS5852 Cigarette test BS5852 Cigarette & match test BS5852 Match test EN1021-1-2 in conjunction with suitable combustion modified foam NFPA 260-Class 1 CAL TB 117- Pass |
| INFORMATION | Patina with use pile 100% wool Reinforced stitching recommended to avoid fraying at seams |
| BOOK | F9979202411 |

23 Colors



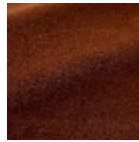
F3928001
NATUREL



F3928002
MIEL



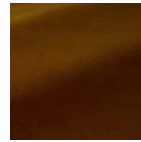
F3928003
MOUSSE



F3928004
AMBRE



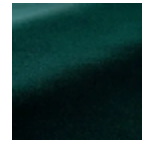
F3928005
HÉRISSON



F3928006
CANNELLE



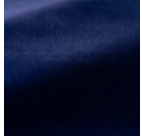
F3928007
OLIVE



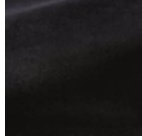
F3928008
ÉMERAUDE



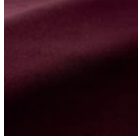
F3928009
CANARD



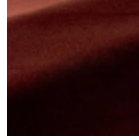
F3928010
OCEAN



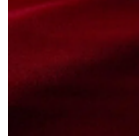
F3928011
SÛIE



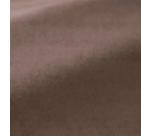
F3928012
AUBERGINE



F3928013
CERISE



F3928014
CARMIN



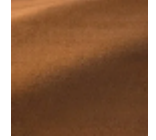
F3928016
LIN



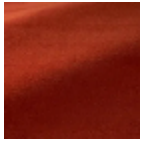
F3928017
SOURIS



F3928018
CHÂTAIGNE



F3928019
CHAMOIS



F3928020
COQUELICOT



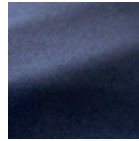
F3928021
AVOCAT



F3928022
SAUGE



F3928023
TEMPÊTE



F3928024
BLEUET