



F3935021 GASSIN

A magnificent linen basket weave, GASSIN brings refinement and elegance thanks its heavy fall and particularly thick, soft hand. It comes in a wide range of harmonious, cheerful colors. Both contemporary and timeless, this beautiful linen can be used for curtains and upholstery.

F3935021 - Olive



Laize : 140,00 cm / 55,11 inch

Pierre Frey

| | |
|-----------------------|--|
| PERFORMANCE | Martindale > 25 000 T |
| TYPE | Jacquards - Plains |
| USE | Intensive use |
| MARTINDALE | 100.000 T |
| COMPOSITION | 72 % Linen - 19 % Cotton - 8 % Polyamide - 1 % Acrylic |
| SALES UNIT | Available per meter/yard |
| WIDTH | 140 cm / 55,11 inch |
| WEIGHT | 1015 gr / ml |
| CARE |      |
| CERTIFICATIONS | BS5852 Cigarette test BS5852 Cigarette & match test BS5852 Match test EN1021-1-2 in conjunction with suitable combustion modified foam NFPA 260-Class 1 |
| BOOK | F9979202410 |

29 Colors



F3935001
Coton



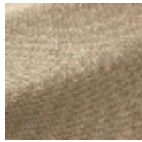
F3935002
Nuage



F3935003
Crème



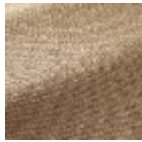
F3935004
Lin



F3935005
Beige



F3935006
Dune



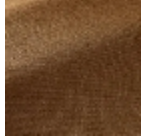
F3935007
Chanvre



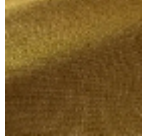
F3935008
Cannelle



F3935009
Ocre



F3935010
Camel



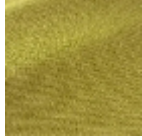
F3935011
Mordoré



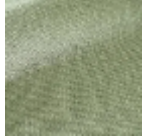
F3935012
Miel



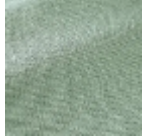
F3935013
Citron



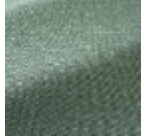
F3935014
Absinthe



F3935015
Sauge



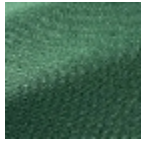
F3935016
Céladon



F3935017
Amande



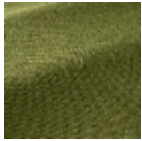
F3935018
Forêt



F3935019
Menthe



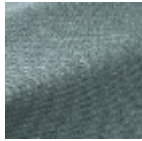
F3935020
Jade



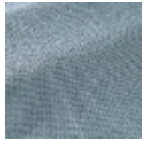
F3935021
Olive



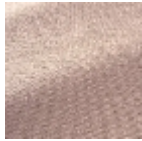
F3935022
Azur



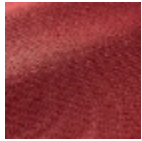
F3935023
Glacier



F3935024
Givre



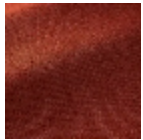
F3935025
Rose



F3935026
Bougainvillier



F3935027
Corail



F3935028
Tangerine



F3935029
Ambre