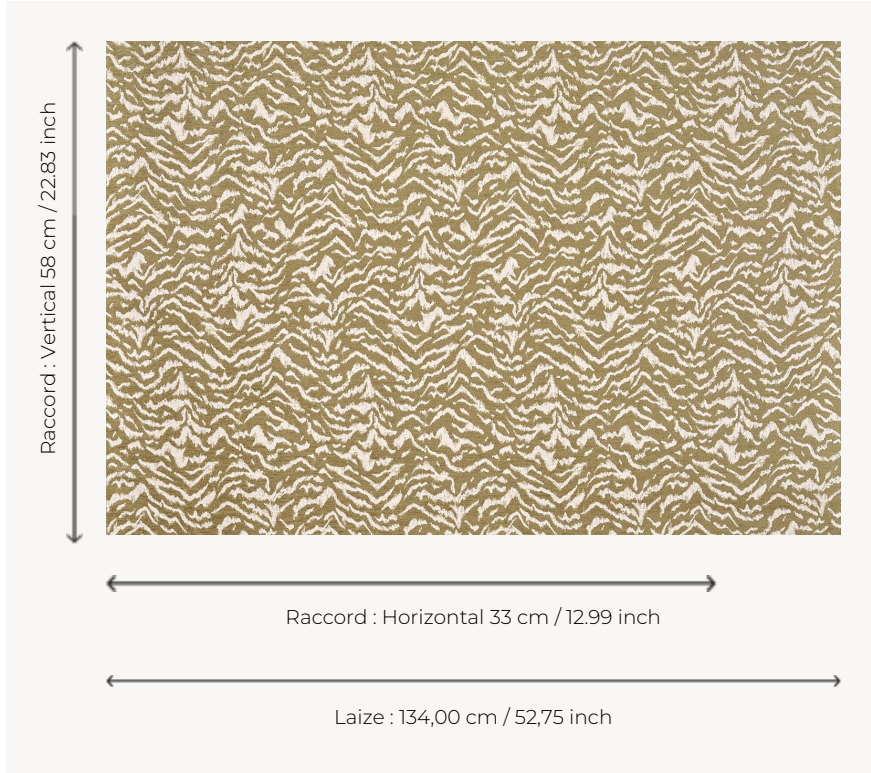


## F3949002 ZÉBREAU

A soft and supple chenille jacquard, featuring an animal pattern with a measured scale, evocative of a young zebra, the foal.

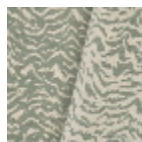
### F3949002 - CHÂTAIGNE



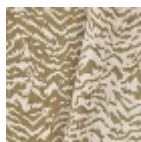
### Pierre Frey

<b>TYPE</b>	-
<b>USE</b>	Moderate use
<b>MARTINDALE</b>	18.000 T
<b>COMPOSITION</b>	53 % Viscose - 25 % Polyester - 22 % Cotton
<b>SALES UNIT</b>	Available per meter/yard
<b>WIDTH</b>	134 cm / 52,75 inch
<b>REPEAT</b>	H: 33 cm - 12,99 inch V: 58 cm - 22,83 inch Straight repeat
<b>WEIGHT</b>	737 gr / ml
<b>CARE</b>	-
<b>CERTIFICATIONS</b>	NFPA 260-Class 1
<b>NOTES</b>	Reversible
<b>INFORMATION</b>	Patina with use Reinforced stitching recommended to avoid fraying at seams
<b>BOOK</b>	F9979202502

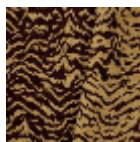
## 3 Colors



F3949001  
AQUA



F3949002  
CHÂTAIGNE



F3949003  
FAUVE