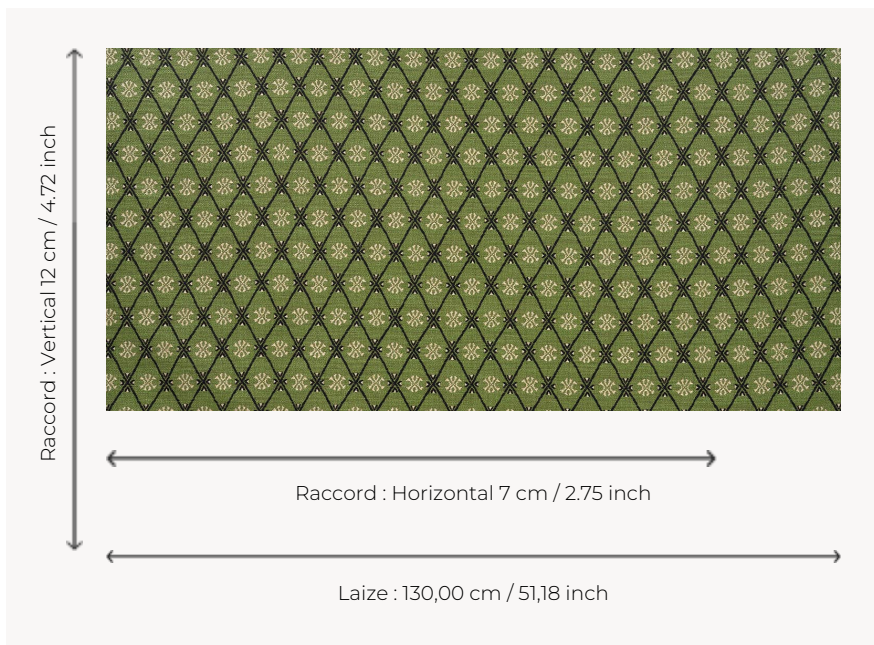



## F3954002 LA CROIX DU SUD

A magnificent Tuareg-inspired pattern, interpreted here in a jacquard with a thick, woolly feel, making it particularly suitable for seating use.

### F3954002 - AGAVE



### Pierre Frey

<b>PERFORMANCE</b>	Martindale > 25 000 T
<b>TYPE</b>	Jacquards
<b>USE</b>	Intensive use
<b>MARTINDALE</b>	70.000 T
<b>COMPOSITION</b>	34 % Acrylic - 22 % Cotton - 16 % Wool - 12 % Virgin wool - 7 % Polyester - 5 % Alpaca - 4 % Polyamide
<b>SALES UNIT</b>	Available per meter/yard
<b>WIDTH</b>	130 cm / 51,18 inch
<b>REPEAT</b>	H: 7 cm - 2,75 inch V: 12 cm - 4,72 inch Straight repeat
<b>WEIGHT</b>	1157 gr / ml
<b>CARE</b>	
<b>CERTIFICATIONS</b>	BS5852 Cigarette test BS5852 Cigarette & match test BS5852 Match test EN1021-1-2 in conjunction with suitable combustion modified foam NFPA 260-Class 1 CAL TB 117- Pass
<b>BOOK</b>	F9979202502

## 4 Colors



F3954001  
SOURCE



F3954002  
AGAVE



F3954003  
OR



F3954004  
SIENNE