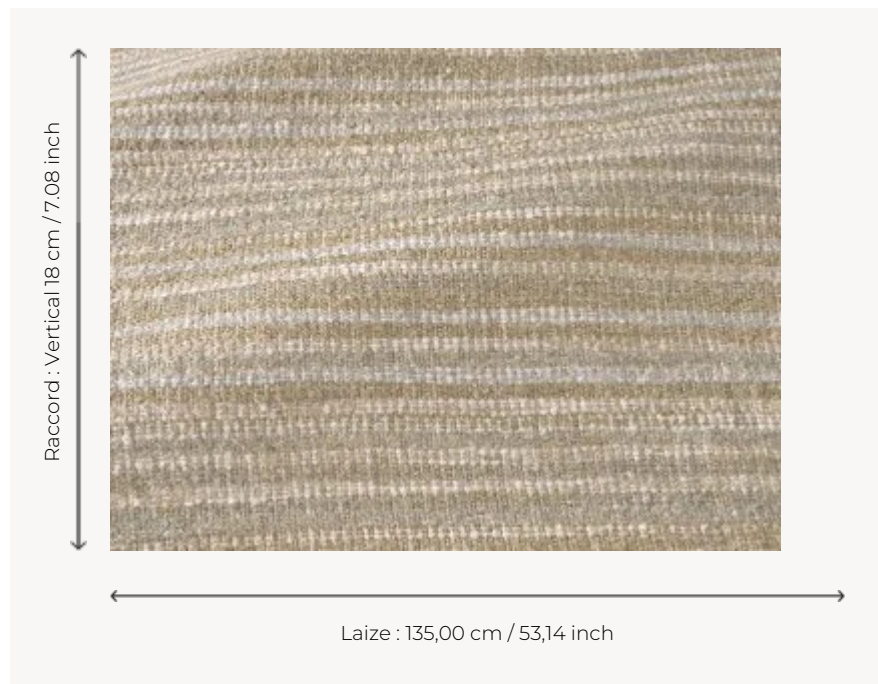




F3971001 BAKARA

A blend of materials giving life to a soft, delicate handmade quality, BAKARA is a magnificent woven bayadère stripe.

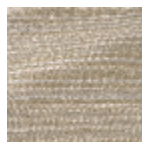
F3971001 - GRÈGE



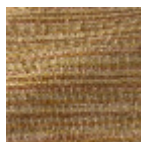
Pierre Frey

PERFORMANCE	Martindale > 25 000 T
TYPE	Fibres douces - Jacquards - Soft fiber fabrics
USE	Normal use
MARTINDALE	40.000 T
COMPOSITION	37 % Linen - 36 % Viscose - 24 % Acrylic - 2 % Polyester - 1 % Polyamide
SALES UNIT	Available per meter/yard
WIDTH	135 cm / 53,14 inch
REPEAT	V: 18 cm - 7,08 inch
WEIGHT	1066 gr / ml
CARE	
CERTIFICATIONS	BS5852 Cigarette test BS5852 Cigarette & match test BS5852 Match test NFPA 260-Class 1 CAL TB 117- Pass
INFORMATION	Stripes perpendicular to selvages
BOOK	F9979202502

2 Colors



F3971001
GRÈGE



F3971002
CHAMOIS