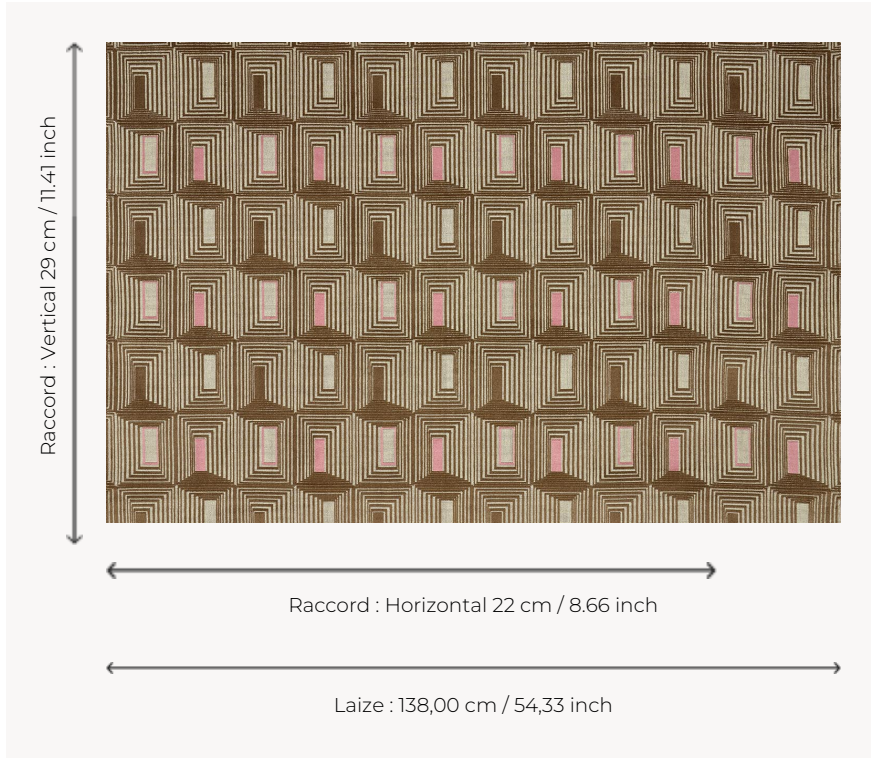


## F3976002 TRAMPOLINE

Straight out of the 1970s, this sumptuous ciselé velvet is distinguished by its finely worked geometric pattern. This elegant velvet comes in a palette of deep, rich colours, offering a touch of sophistication and character.

### F3976002 - CHÂTAIGNE



### Pierre Frey

<b>PERFORMANCE</b>	Martindale > 25 000 T
<b>TYPE</b>	Fibres douces - Soft fiber fabrics - Velvets
<b>USE</b>	Normal use
<b>MARTINDALE</b>	>100.000 T
<b>COMPOSITION</b>	100 % Polyester
<b>SALES UNIT</b>	Available per meter/yard
<b>WIDTH</b>	138 cm / 54,33 inch
<b>REPEAT</b>	H: 22 cm - 8,66 inch V: 29 cm - 11,41 inch Straight repeat
<b>WEIGHT</b>	1283 gr / ml
<b>CARE</b>	-
<b>CERTIFICATIONS</b>	BS5852 Cigarette test EN1021-1-2 in conjunction with suitable combustion modified foam NFPA 260-Class 1 CAL TB 117- Pass

## 2 Colors



F3976001  
EMERAUDE



F3976002  
CHÂTAIGNE