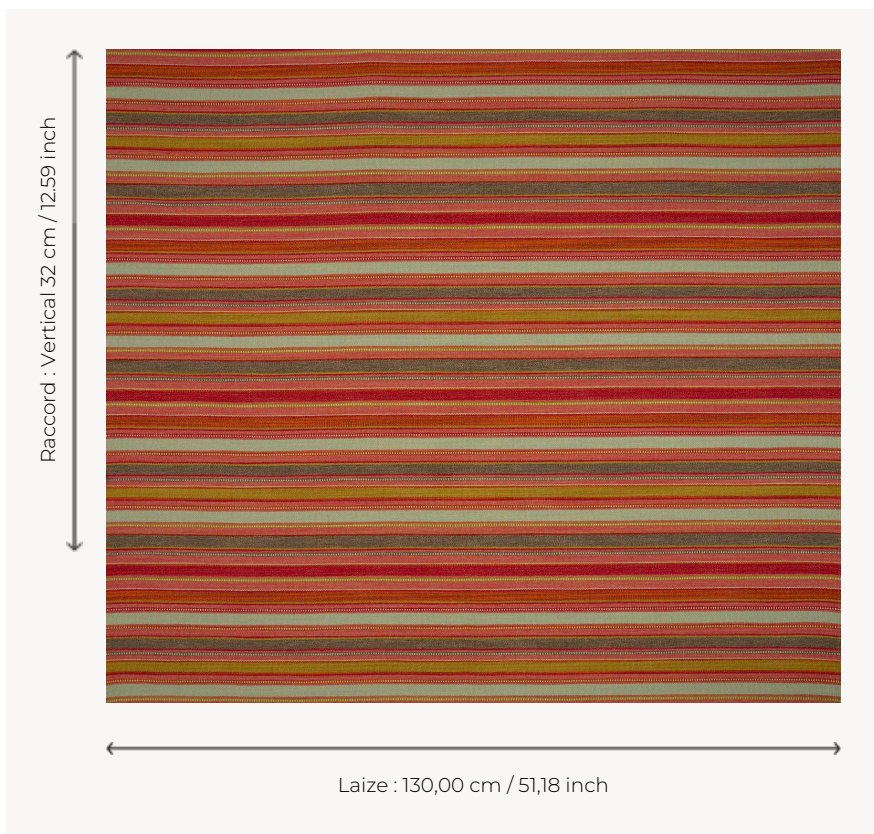


## F3993001 ALULA

Designed in collaboration with Richard Smith, this little kilim-inspired multicoloured bayadère stripe comes in two shades, one pastel, the other coordinating with RAYURE BIVOUAC F3958. Its supple, woolly hand gives it a warm, authentic character.

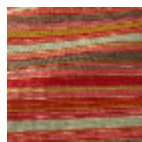
### F3993001 - HORIZON



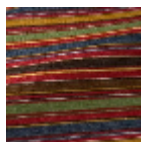
### Pierre Frey

<b>PERFORMANCE</b>	Martindale > 25 000 T
<b>TYPE</b>	Jacquards
<b>USE</b>	Intensive use
<b>MARTINDALE</b>	70.000 T
<b>COMPOSITION</b>	30 % Cotton - 29 % Wool - 29 % Acrylic - 12 % Polyester
<b>SALES UNIT</b>	Available per meter/yard
<b>WIDTH</b>	130 cm / 51,18 inch
<b>REPEAT</b>	V: 32 cm - 12,59 inch
<b>WEIGHT</b>	741 gr / ml
<b>CARE</b>	-
<b>CERTIFICATIONS</b>	BS5852 Cigarette test BS5852 Cigarette & match test BS5852 Match test EN1021-1-2 in conjunction with suitable combustion modified foam NFPA 260-Class 1 CAL TB 117- Pass
<b>INFORMATION</b>	Stripes perpendicular to selvages
<b>BOOK</b>	F9979202502

## 2 Colors



F3993001  
HORIZON



F3993002  
BERBÈRE