

F3993002 ALULA

Designed in collaboration with Richard Smith, this little kilim-inspired multicoloured bayadère stripe comes in two shades, one pastel, the other coordinating with RAYURE BIVOUAC F3958. Its supple, woolly hand gives it a warm, authentic character.

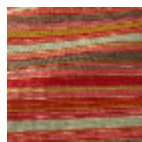
F3993002 - BERBÈRE



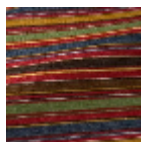
Pierre Frey

PERFORMANCE	Martindale > 25 000 T
TYPE	Jacquards
USE	Intensive use
MARTINDALE	70.000 T
COMPOSITION	30 % Cotton - 29 % Wool - 29 % Acrylic - 12 % Polyester
SALES UNIT	Available per meter/yard
WIDTH	130 cm / 51,18 inch
REPEAT	V: 32 cm - 12,59 inch
WEIGHT	741 gr / ml
CARE	-
CERTIFICATIONS	BS5852 Cigarette test BS5852 Cigarette & match test BS5852 Match test EN1021-1-2 in conjunction with suitable combustion modified foam NFPA 260-Class 1 CAL TB 117- Pass
INFORMATION	Stripes perpendicular to selvages
BOOK	F9979202502

2 Colors



F3993001
HORIZON



F3993002
BERBÈRE