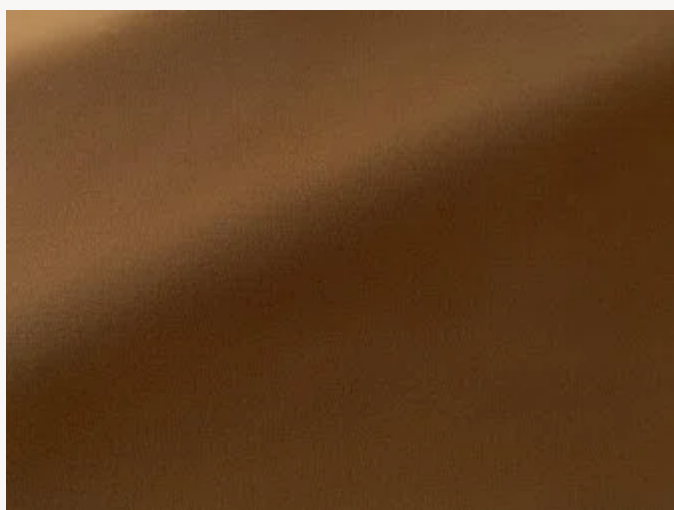




F4019009 CHROMA

India Mahdavi has created a new velvet fabric for Pierre Frey. A material invented in Kashmir, it was originally called 'swan's down' and was first used in Iran before reaching Europe. CHROMA is a supple, compact and hard-wearing 100% cotton velvet that is extremely soft to the touch and to the eye. It comes in a unique and distinctive range of colours that complements the existing ranges. The use of nanotechnology to improve the performance of this velvet makes it the new must-have for the Maison. This stain-resistant treatment, which is PFAS-free, eco-responsible and CO classified, limits the penetration of liquids and perfectly preserves the natural look and softness of the velvet.

F4019009 - TOFFEE



Laize : 138,00 cm / 54,33 inch

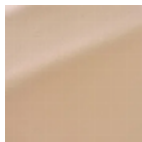
Pierre Frey

TYPE	Fibres douces - Plains - Velvets
ARTIST	India Mahdavi
USE	Intensive use
MARTINDALE	>100.000 T
COMPOSITION	100 % Cotton
SALES UNIT	Available per meter/yard
WIDTH	138 cm / 54,33 inch
WEIGHT	779 gr / ml
CARE	
CERTIFICATIONS	CAL TB 117- Pass
NOTES	Can be embossed Stain & water repellent
INFORMATION	pile 100% cotton
BOOK	F9979202507

35 Colors



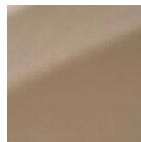
F4019001
NUAGE



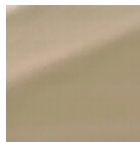
F4019002
SAND STONE



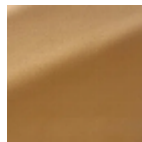
F4019003
BUTTER



F4019004
CLASSIC
BEIGE



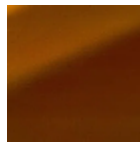
F4019005
GYPSUM



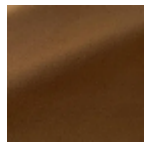
F4019006
AMERICANO



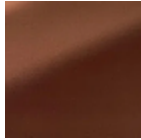
F4019007
HONEY



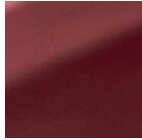
F4019008
NOISETTE



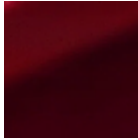
F4019009
TOFFEE



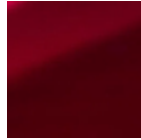
F4019010
MOWGLI



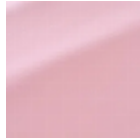
F4019011
HEATHER



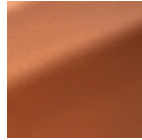
F4019012
HENNA



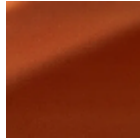
F4019013
ROYAL



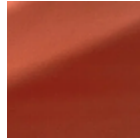
F4019014
CANDY PINK



F4019015
BLUSH



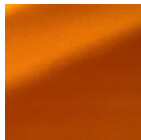
F4019016
AUBURN



F4019017
PÊCHE



F4019018
SANGUINE



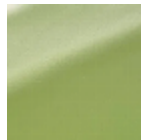
F4019019
CAPUCINE



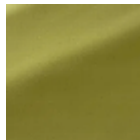
F4019020
SAFRAN



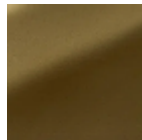
F4019021
DUSKY
LEMON



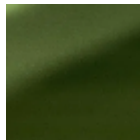
F4019022
GREEN TEA



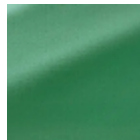
F4019023
ASPARAGUS



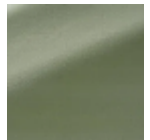
F4019024
ARMY



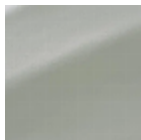
F4019025
CACTUS



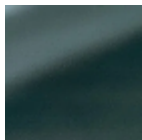
F4019026
MING GREEN



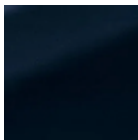
F4019027
LICHEN



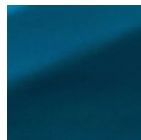
F4019028
MILKY MINT



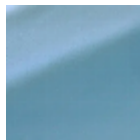
F4019029
NORTH TEA



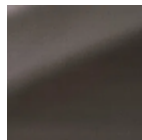
F4019030
NIGHT



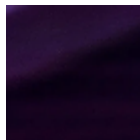
F4019031
DENIM



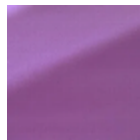
F4019032
BABY BLUE



F4019033
DUMBO



F4019034
PURPLE RAIN



F4019035
GLYCINE