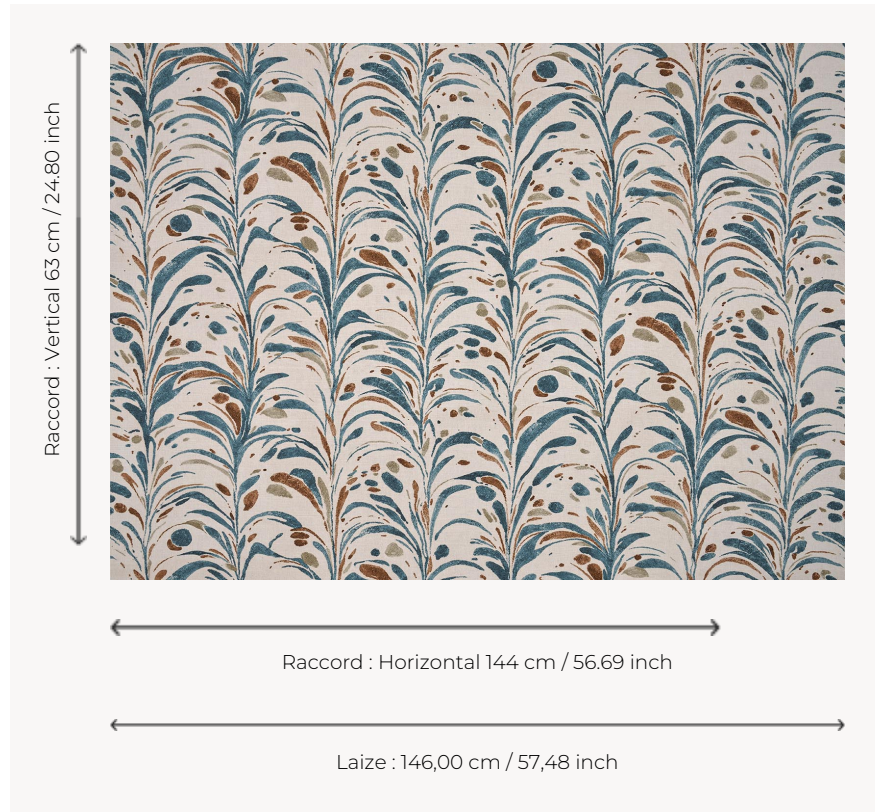


F4049001 MARMOR

In the 18th century, for reasons of economy but also because of a tradition of hand-painted decorations, Sweden was very attracted to trompe-l'œil faux marble: historic residences that are still standing are full of them. MARMOR playfully evokes these painted motifs, with its design of droplets arranged in stripes and printed on linen, in a cameo of blues and woody tones.

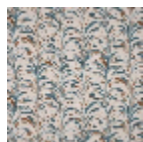
F4049001 - AQUATIQUE



Pierre Frey

TYPE	Prints
COMPOSITION	55 % Linen - 45 % Cotton
SALES UNIT	Available per meter/yard
WIDTH	146 cm / 57,48 inch
REPEAT	H: 144 cm - 56,69 inch V: 63 cm - 24,80 inch Straight repeat
WEIGHT	372 gr / ml
CARE	

1 Colors



F4049001
AQUATIQUE