

# F4083001 TATIHO

High-performance indoor-outdoor fabric, TATIHO's small stripe on a caviar background has the elegance and freshness of timeless patterns. Its chenille yarn gives it a particularly soft and supple feel, while being very resistant for use on seating. Woven in Pierre Frey's EPV-certified workshops in northern France, European experts in light-resistant, water-repellent and washable textiles.

## F4083001 - BEIGE



Raccord : Horizontal 3 cm / 1.18 inch

Laize : 139,00 cm / 54,72 inch

## Pierre Frey

<b>TYPE</b>	Chenille - Fibres douces - Jacquards - Semi plains
<b>USE</b>	Intensive use
<b>MARTINDALE</b>	60.000 T
<b>COMPOSITION</b>	100 % Acrylic
<b>SALES UNIT</b>	Available per meter/yard
<b>WIDTH</b>	139 cm / 54,72 inch
<b>REPEAT</b>	H: 3 cm - 1,18 inch Straight repeat
<b>WEIGHT</b>	695 gr / ml
<b>CARE</b>	
<b>CERTIFICATIONS</b>	NFPA 260-Class 1 CAL TB 117- Pass
<b>NOTES</b>	<p>High lightfastness, mold-resistant, stain &amp; water repellent</p> <p>Washable fabric</p> <p>Made in France (EPV Living Heritage Mill)</p> <p>Indoor-Outdoor fabric</p> <p>Woven in Pierre Frey's workshop in northern France. Living Heritage Mill.</p>
<b>INFORMATION</b>	<p>Stripes parallel to selvages</p> <p>For outdoor use, make sure to use appropriate lining materials.</p> <p>Remember to store pads and cushions in a clean, dry place when not in use.</p>

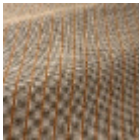
6 Colors



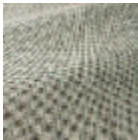
F4083001  
BEIGE



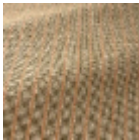
F4083002  
CAMEL



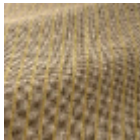
F4083003  
RIVAGE



F4083004  
OCEAN



F4083005  
PRINTEMPS



F4083006  
PISSENLIT