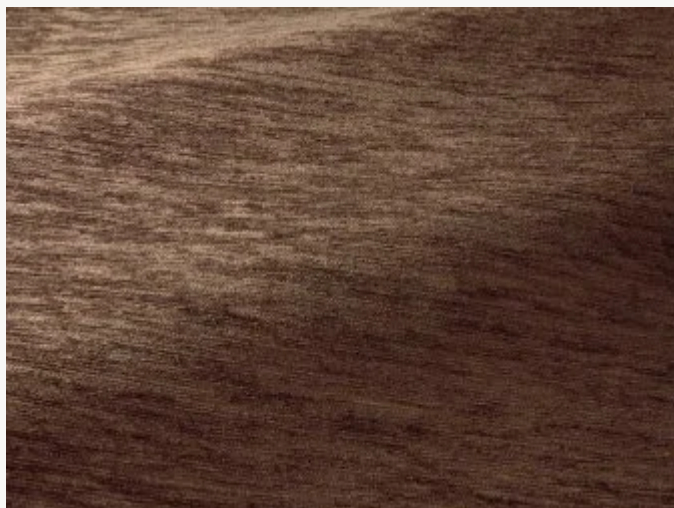




F4085022 CALVI

A high-performance outdoor fabric, CALVI is an end-to-end plain chenille with a velvety, mottled appearance and an exceptionally soft, supple texture. Perfect for upholstery, its captivating color palette reflects light with elegance. CALVI is woven in Pierre Frey's EPV-certified workshops in northern France, celebrated across Europe for their expertise in creating stain- and light-resistant textiles.

F4085022 - CAFÉ



Laize : 138,00 cm / 54,33 inch

Pierre Frey

PERFORMANCE	Martindale > 25 000 T
TYPE	Chenille - Fibres douces - Plains
USE	Intensive use
MARTINDALE	50.000 T
COMPOSITION	97 % Acrylic - 3 % Polyamide
SALES UNIT	Available per meter/yard
WIDTH	138 cm / 54,33 inch
WEIGHT	690 gr / ml
CARE	

CERTIFICATIONS	BS5852 Cigarette test NFPA 260-Class 1 CAL TB 117- Pass
-----------------------	---

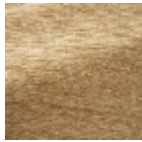
NOTES	High lightfastness, mold-resistant, stain & water repellent Washable fabric Made in France (EPV Living Heritage Mill) Indoor-Outdoor fabric Woven in Pierre Frey's workshop in northern France.Living Heritage Mill.
--------------	--

INFORMATION	Reinforced stitching recommended to avoid fraying at seams For outdoor use, make sure to use appropriate lining materials. Remember to store pads and cushions in a clean, dry place when not in use.
--------------------	---

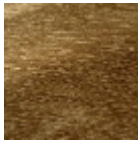
23 Colors



F4085001
GREGE



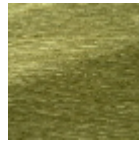
F4085002
CHANVRE



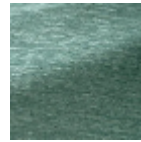
F4085003
NOISETTE



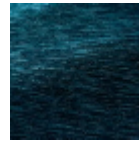
F4085004
MIEL



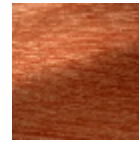
F4085005
OLIVE



F4085006
CELADON



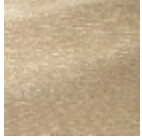
F4085007
OCEAN



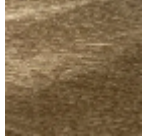
F4085008
TERRACOTTA



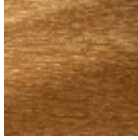
F4085009
ECRU



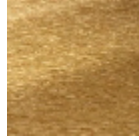
F4085010
AVOINE



F4085011
LIN



F4085012
CAMEL



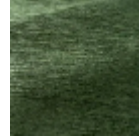
F4085013
MORDORÉ



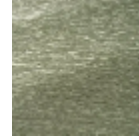
F4085014
ANIS



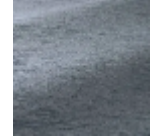
F4085015
PISTACHE



F4085016
FORÊT



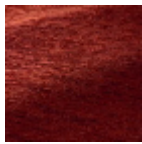
F4085017
AMANDE



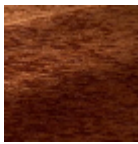
F4085018
LAGON



F4085019
AUBERGINE



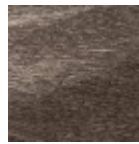
F4085020
ACAJOU



F4085021
HAVANE



F4085022
CAFÉ



F4085023
TAUPE