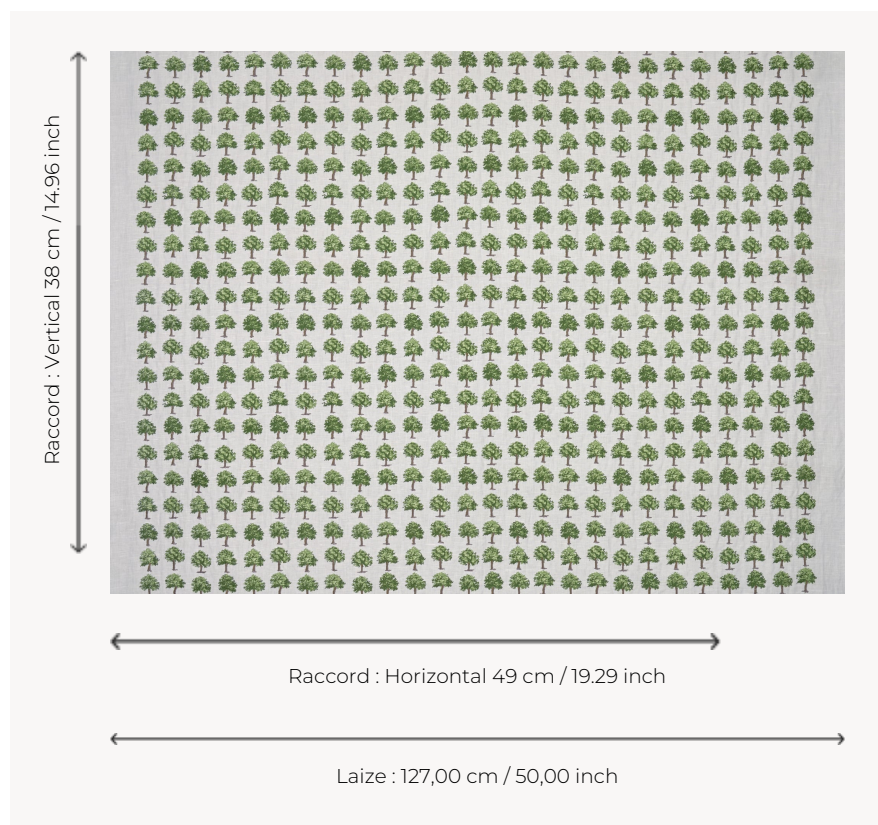


F4108001 LA PEPINIERE

LA PÉPINIÈRE is a delightful linen embroidery inspired by trees sketched in four exceptional collections of drawings known as the 'Albums de Marly', preserved by the National Archives in the collections of the King's Buildings. Its rectilinear composition is a nod to the layout of French formal gardens. Each volume contains drawings executed in watercolour, Indian ink and wash, enhanced with gouache and varnish, and framed by a double black border, sumptuously bound in red morocco leather bearing the arms of Louis XIV. 'Rather than a working tool intended for use by an architect, these representations, with their meticulous and picturesque rendering, were undoubtedly reserved for the enjoyment of the master of the house.'

F4108001 - FEUILLE



Pierre Frey

TYPE	Embroideries
COMPOSITION	34 % Linen - 30 % Viscose - 23 % Cotton - 13 % Polyester
SALES UNIT	Available per meter/yard
WIDTH	127 cm / 50,00 inch
REPEAT	H: 49 cm - 19,29 inch V: 38 cm - 14,96 inch Half drop repeat
WEIGHT	482 gr / ml
CARE	

1 Colors



F4108001
FEUILLE