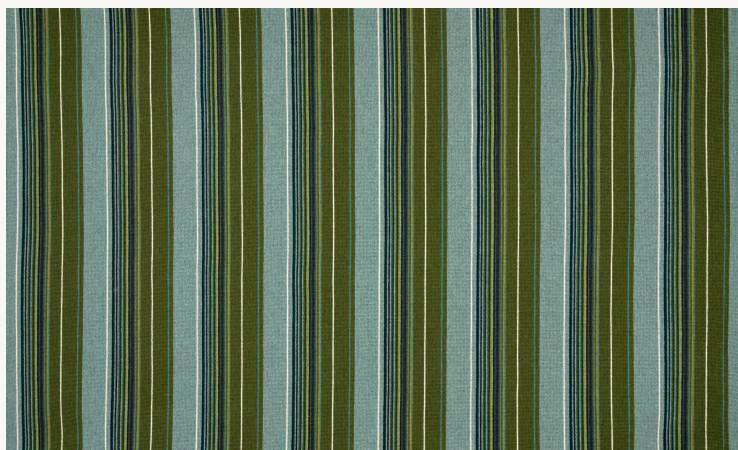




F4117002 RAYURE ANJOU

A magnificent épinglé wool stripe whose design and quality evoke timeless and comforting worlds. Its vibrant and luminous colours and dense weave make it a perfect complement to all of Maison Pierre Frey's collections.

F4117002 - AQUATIQUE



Raccord : Horizontal 19 cm / 7.48 inch

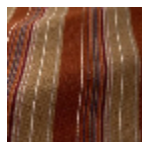


Laize : 149,00 cm / 58,66 inch

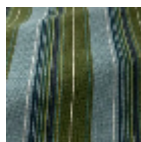
Pierre Frey

| | |
|-----------------------|---|
| PERFORMANCE | Martindale > 25 000 T |
| TYPE | Epinglé velvets |
| USE | Moderate use |
| MARTINDALE | 100.000 T |
| COMPOSITION | 52 % Wool - 30 % Cotton - 10 % Polyester - 8 % Polyamide |
| SALES UNIT | Available per meter/yard |
| WIDTH | 149 cm / 58,66 inch |
| REPEAT | H: 19 cm - 7,48 inch Straight repeat |
| WEIGHT | 1266 gr / ml |
| CARE | |
| CERTIFICATIONS | BS5852 Match test in conjunction with suitable combustion modified foam EN1021-1-2 BS5852 Cigarette test NFPA 260-Class 1 CAL TB 117- Pass CRIB 5 |
| INFORMATION | Stripes parallel to selvages Reinforced stitching recommended to avoid fraying at seams |

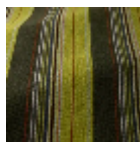
4 Colors



F4117001
TERRES



F4117002
AQUATIQUE



F4117003
PRINTEMPS



F4117004
VÉGÉTAL