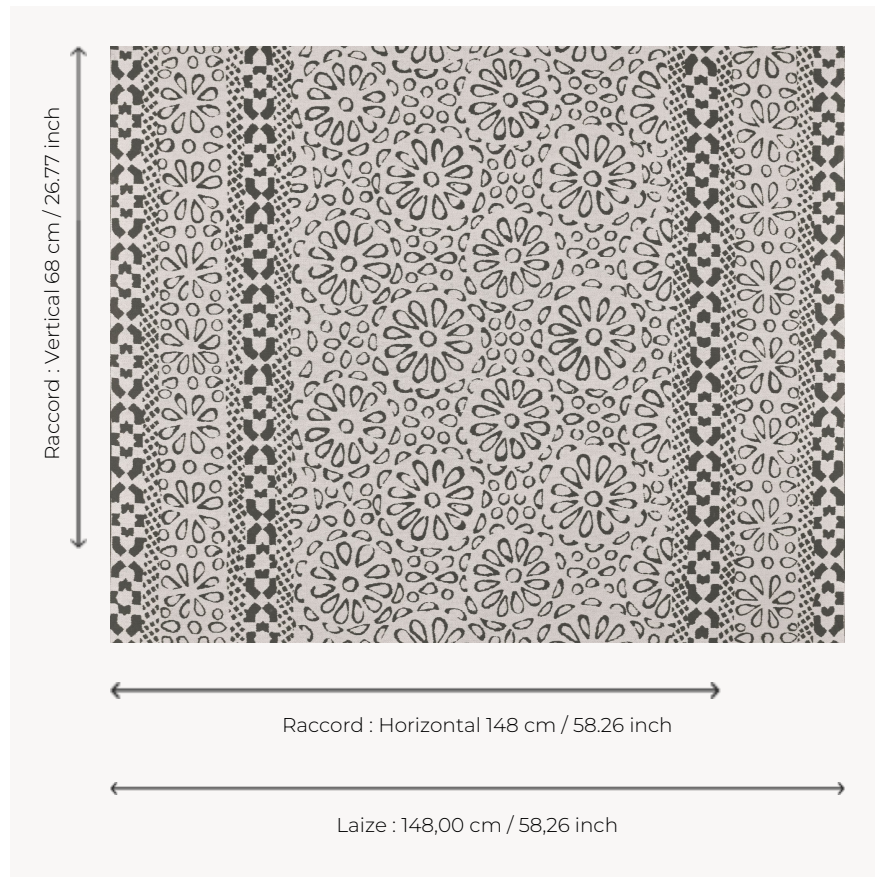


## F4123002 CASA

In Isabelle de Borchgrave's universe, the mashrabiya embodies a poetic boundary between interior and exterior, between the intimate and the visible, allowing just enough light to pass through to double her work with its reflection on the floor. The artist pays homage to Oriental architecture, where the mashrabiya becomes an artistic filter through which she expresses her fascination with world cultures, travel and her love of detail. A magnificent thick and soft cotton jacquard, CASA is particularly suitable for seating and offers two interpretations, one positive and one negative, thanks to its double-sided construction. It is woven in Pierre Frey's EPV-certified workshops in northern France.

### F4123002 - GRAPHITE



### Pierre Frey

TYPE	Jacquards
ARTIST	Isabelle De Borchgrave
USE	Normal use
MARTINDALE	65.000 T
COMPOSITION	100 % Cotton
SALES UNIT	Available per meter/yard
WIDTH	148 cm / 58,26 inch
REPEAT	H: 148 cm - 58,26 inch V: 68 cm - 26,77 inch Free match
WEIGHT	791 gr / ml
CARE	
NOTES	Reversible Made in France (EPV Living Heritage Mill) Woven in Pierre Frey's workshop in northern France. Living Heritage Mill.
INFORMATION	Reinforced stitching recommended to avoid fraying at seams

2 Colors



F4123001  
AMBRE



F4123002  
GRAPHITE