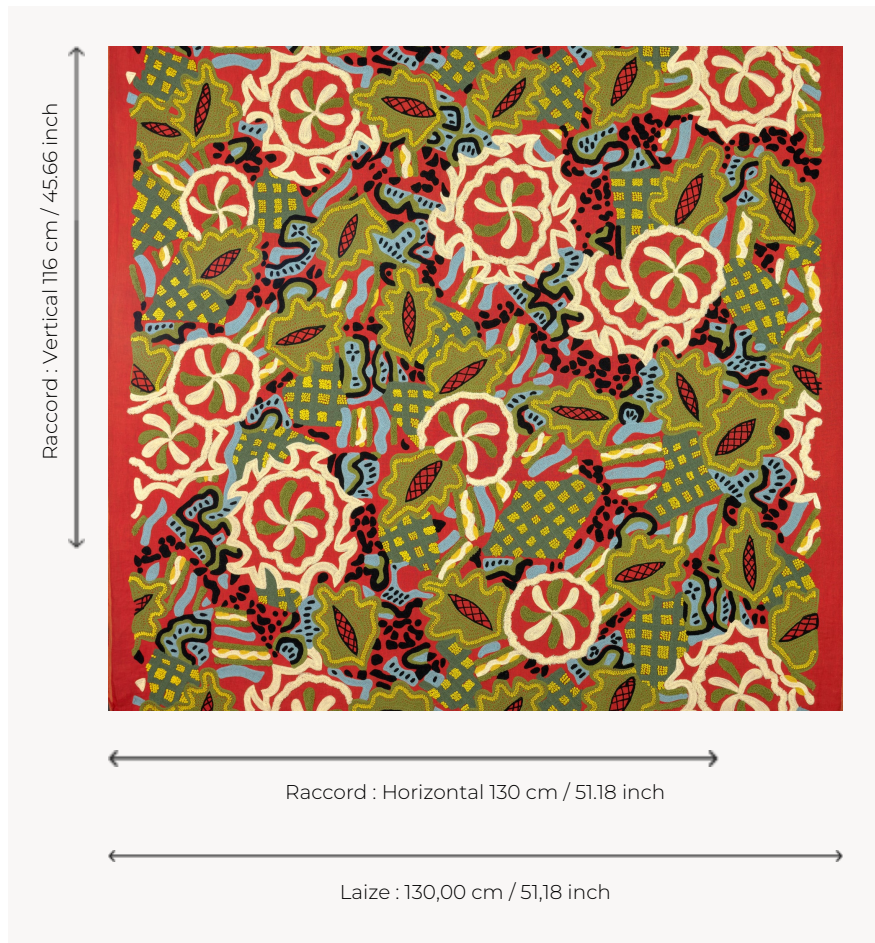


## F4126001 BEBELLE

Isabelle de Borchgrave loves collages. She rediscovers the freedom to place each element one after the other with a childlike spirit, a spontaneity found in her artistic gesture, allowing chance to strike just the right note. Each piece is placed with confidence, without hesitation, for a surprisingly beautiful result. Large sheets are painted in the desired colours. The artist tears them into shapes as she orchestrates her work. A favourite of the Pierre Frey studio, this magnificent work has been transcribed onto fabric using an all-over embroidery technique that is particularly artisanal and textured.

### F4126001 - ORIGINAL



### Pierre Frey

TYPE	Embroideries
ARTIST	Isabelle De Borchgrave
COMPOSITION	43 % Acrylic - 32 % Linen - 18 % Viscose - 7 % Cotton
SALES UNIT	Available per meter/yard
WIDTH	130 cm / 51,18 inch
REPEAT	H: 130 cm - 51,18 inch V: 116 cm - 45,66 inch Straight repeat
WEIGHT	910 gr / ml
CARE	-
NOTES	Handcrafted embroidery

1 Colors



F4126001  
ORIGINAL