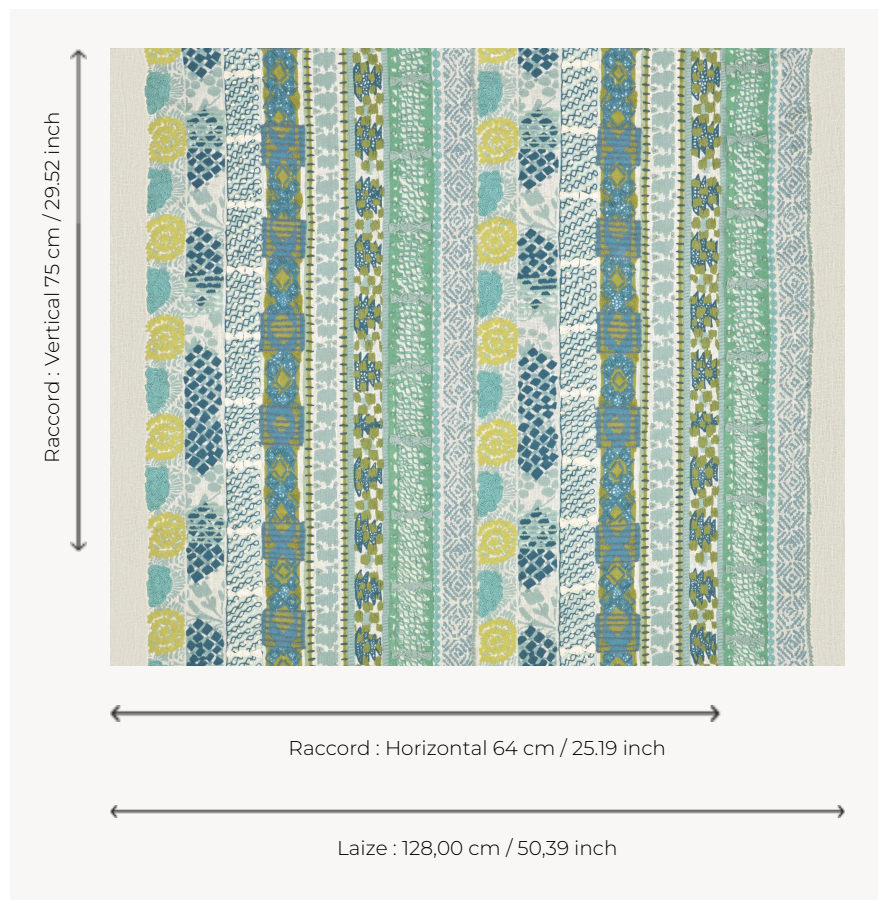


F4127001 FRIDA

Isabelle de Borchgrave's tribute to the world of Frida Kahlo inspired by her latest exhibition at the Royal Museums of Fine Arts in Brussels. The design recalls a series of belts and textile trims found in Frida's wardrobe: weaves, embroidery, floral motifs, warm and contrasting colours. The artist admired

Frida Kahlo's courage, her creative freedom and her bold feminine style. Pierre Frey's studio assembled these ribbons to create a set of stripes embroidered with particularly artisanal and textured stitches.

F4127001 - GLACIER



Pierre Frey

TYPE	Embroideries
ARTIST	Isabelle De Borchgrave
COMPOSITION	48 % Linen - 20 % Acrylic - 14 % Cotton - 12 % Polyester - 4 % Viscose - 2 % Raffia
SALES UNIT	Available per meter/yard
WIDTH	128 cm / 50,39 inch
REPEAT	H: 64 cm - 25,19 inch V: 75 cm - 29,52 inch Straight repeat
WEIGHT	1024 gr / ml
CARE	-
NOTES	Handcrafted embroidery

2 Colors



F4127001
GLACIER



F4127002
CARMIN
ÉCLATANT