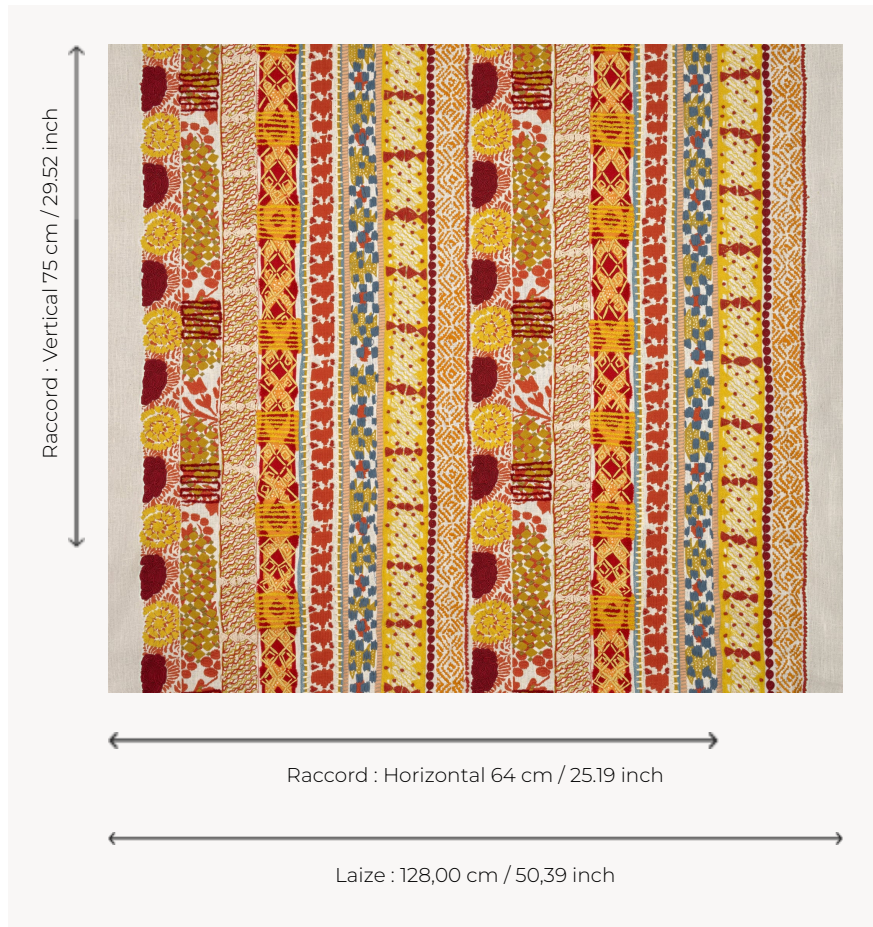


## F4127002 FRIDA

Isabelle de Borchgrave's tribute to the world of Frida Kahlo inspired by her latest exhibition at the Royal Museums of Fine Arts in Brussels. The design recalls a series of belts and textile trims found in Frida's wardrobe: weaves, embroidery, floral motifs, warm and contrasting colours. The artist admired

Frida Kahlo's courage, her creative freedom and her bold feminine style. Pierre Frey's studio assembled these ribbons to create a set of stripes embroidered with particularly artisanal and textured stitches.

### F4127002 - CARMIN ÉCLATANT



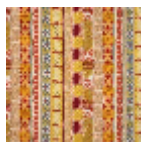
### Pierre Frey

<b>TYPE</b>	Embroideries
<b>ARTIST</b>	Isabelle De Borchgrave
<b>COMPOSITION</b>	48 % Linen - 20 % Acrylic - 14 % Cotton - 12 % Polyester - 4 % Viscose - 2 % Raffia
<b>SALES UNIT</b>	Available per meter/yard
<b>WIDTH</b>	128 cm / 50,39 inch
<b>REPEAT</b>	H: 64 cm - 25,19 inch V: 75 cm - 29,52 inch Straight repeat
<b>WEIGHT</b>	1024 gr / ml
<b>CARE</b>	
<b>NOTES</b>	Handcrafted embroidery

## 2 Colors



F4127001  
GLACIER



F4127002  
CARMIN  
ÉCLATANT