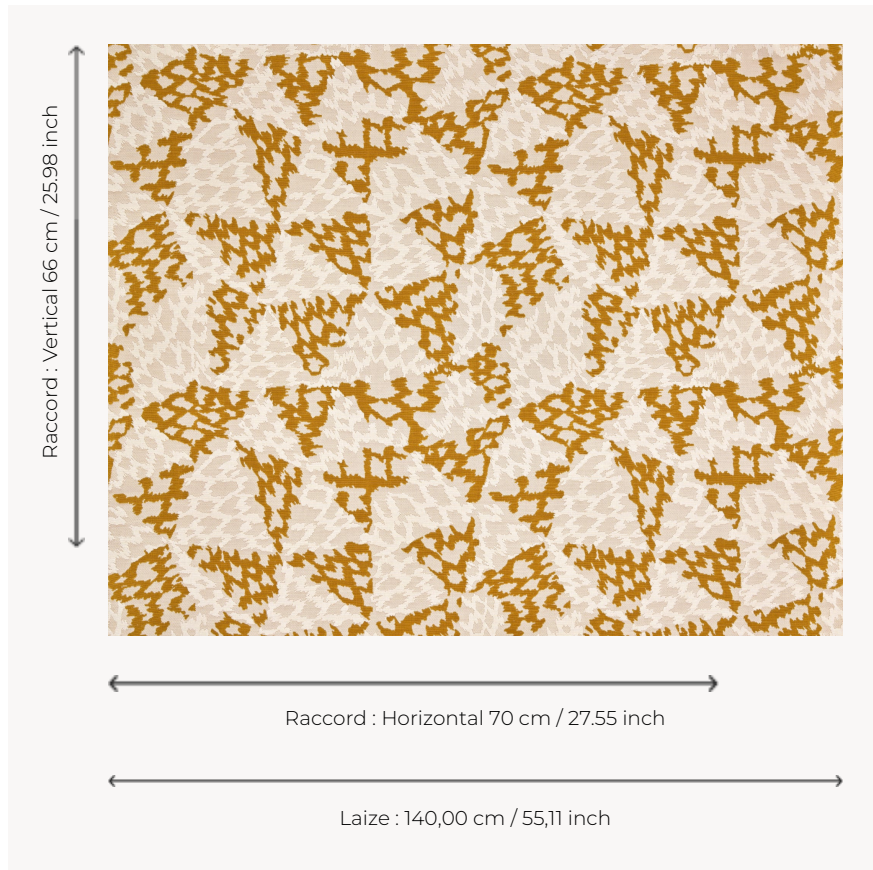


## F4129001 LAGUNE

Paper becomes fabric, and fabric becomes landscape. Isabelle de Borchgrave has created over 3,000 designs, unique patterns that repeat, and a harmony of perfectly balanced colours that so distinctly defines her art. For the artist, stencils are far more than a technique: they are a tool of freedom, rhythm, and limitless creation. She plays with transparency, repetition, and the breaths within the pattern, making the paper vibrate like a textile. From this equilibrium came LAGUNE, a beautiful loop velvet with a cotton-like appearance, particularly well-suited for seating.

### F4129001 - DUNE



### Pierre Frey

<b>PERFORMANCE</b>	High Rub Test
<b>TYPE</b>	Epinglé velvets - Jacquards
<b>ARTIST</b>	Isabelle De Borchgrave
<b>USE</b>	Moderate use
<b>MARTINDALE</b>	> 45.000 T
<b>COMPOSITION</b>	61 % Viscose - 23 % Polyester - 16 % Cotton
<b>SALES UNIT</b>	Available per meter/yard
<b>WIDTH</b>	140 cm / 55,11 inch
<b>REPEAT</b>	H: 70 cm - 27,55 inch V: 66 cm - 25,98 inch Straight repeat
<b>WEIGHT</b>	910 gr / ml
<b>CARE</b>	
<b>CERTIFICATIONS</b>	NFPA 260-Class 1 CAL TB 117- Pass
<b>INFORMATION</b>	Reinforced stitching recommended to avoid fraying at seams

2 Colors



F4129001  
DUNE



F4129002  
AQUATIQUE