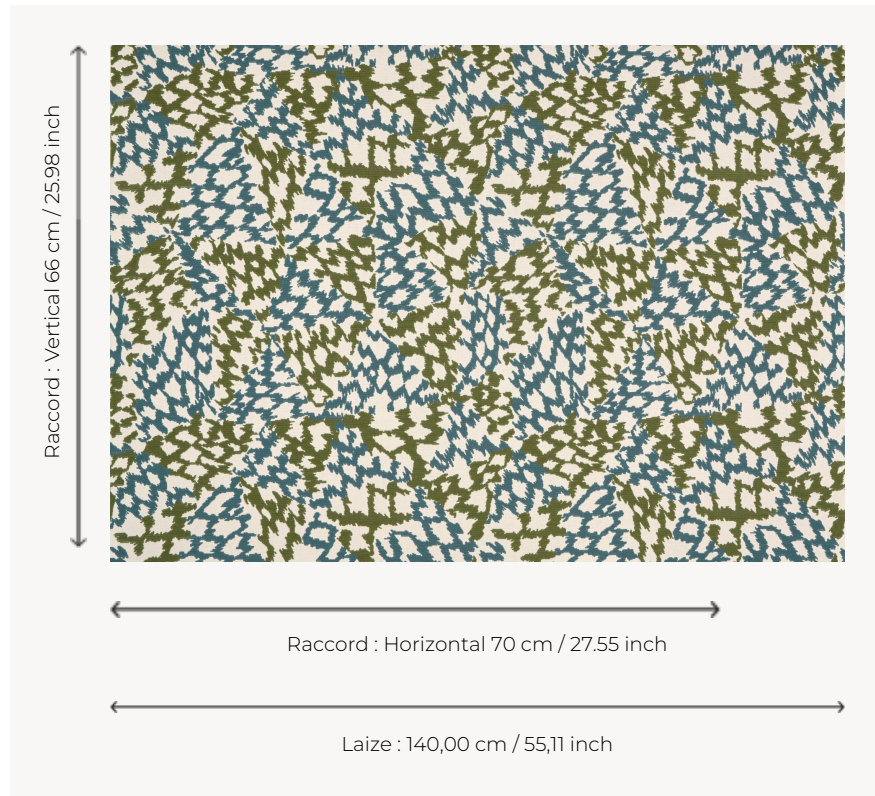


F4129002 LAGUNE

Paper becomes fabric, and fabric becomes landscape. Isabelle de Borchgrave has created over 3,000 designs, unique patterns that repeat, and a harmony of perfectly balanced colours that so distinctly defines her art. For the artist, stencils are far more than a technique: they are a tool of freedom, rhythm, and limitless creation. She plays with transparency, repetition, and the breaths within the pattern, making the paper vibrate like a textile. From this equilibrium came LAGUNE, a beautiful loop velvet with a cotton-like appearance, particularly well-suited for seating.

F4129002 - AQUATIQUE



Pierre Frey

PERFORMANCE	High Rub Test
TYPE	Epinglé velvets - Jacquards
ARTIST	Isabelle De Borchgrave
USE	Moderate use
MARTINDALE	> 45.000 T
COMPOSITION	61 % Viscose - 23 % Polyester - 16 % Cotton
SALES UNIT	Available per meter/yard
WIDTH	140 cm / 55,11 inch
REPEAT	H: 70 cm - 27,55 inch V: 66 cm - 25,98 inch Straight repeat
WEIGHT	910 gr / ml
CARE	
CERTIFICATIONS	NFPA 260-Class 1 CAL TB 117- Pass
INFORMATION	Reinforced stitching recommended to avoid fraying at seams

2 Colors



F4129001
DUNE



F4129002
AQUATIQUE