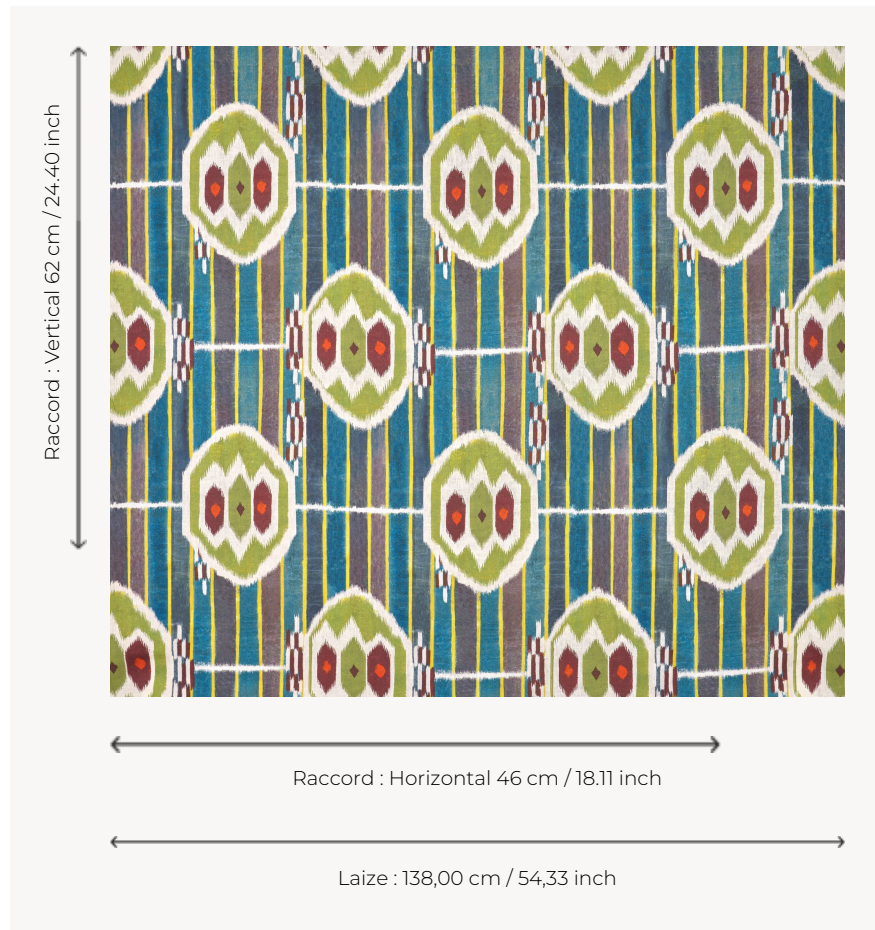


F4132001 DANA

This pattern originates from a paper kaftan. Isabelle de Borchgrave has transformed the textile tradition of Central Asia into living sculpture. The repeated oval pattern framed by vertical lines evokes these ancestral weaves where colour vibrates and dances. The artist created a collection of ten kaftans which were the subject of a remarkable exhibition. This design is so beautiful and pure that its adaptation to textiles was obvious, magnificently printed on soft linen.

F4132001 - ORIGINAL



Pierre Frey

TYPE	Prints
ARTIST	Isabelle De Borchgrave
COMPOSITION	100 % Linen
SALES UNIT	Available per meter/yard
WIDTH	138 cm / 54,33 inch
REPEAT	H: 46 cm - 18,11 inch V: 62 cm - 24,40 inch Straight repeat
WEIGHT	372 gr / ml
CARE	
INFORMATION	Some little white dots may appear on the fabric due to the authentic linen fiber

1 Colors



F4132001
ORIGINAL