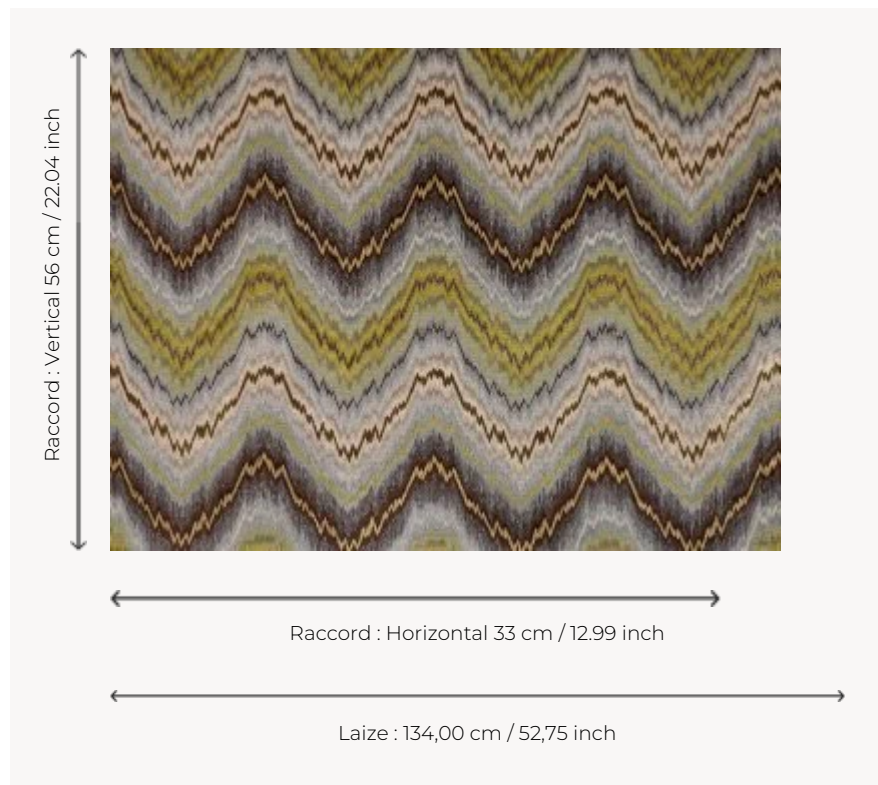


I5549003 BUDAPEST

Magnificent carved velvet with a dominant linen pattern of Hungarian stitch, characteristic of the 17th century.

I5549003 - Laguna



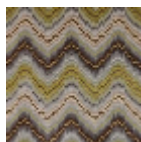
Fadini Borghi

| | |
|-----------------------|---|
| PERFORMANCE | Martindale > 25 000 T |
| TYPE | Epinglé velvets |
| USE | Intensive use |
| MARTINDALE | 60.000 T |
| COMPOSITION | 76 % Linen - 12 % Polyester - 12 % Cotton |
| SALES UNIT | Available per meter/yard |
| WIDTH | 134 cm / 52,75 inch |
| REPEAT | H: 33 cm - 12,99 inch V: 56 cm - 22,04 inch Straight repeat |
| WEIGHT | 967 gr / ml |
| CARE |  |
| CERTIFICATIONS | BS5852 Cigarette test BS5852 Cigarette & match test BS5852 Match test EN1021-1-2 in conjunction with suitable combustion modified foam NFPA 260-Class 1 |
| INFORMATION | pile 100% linen |

3 Colors



I5549001
Carmine



I5549003
Laguna



I5549004
Sottobosco