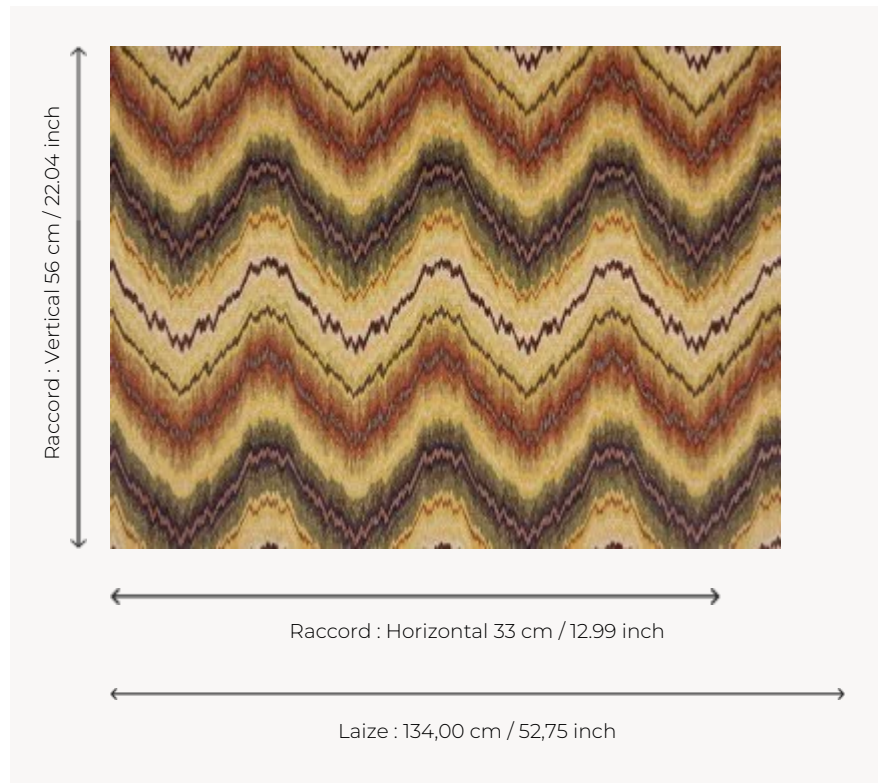


## I5549004 BUDAPEST

Magnificent carved velvet with a dominant linen pattern of Hungarian stitch, characteristic of the 17th century.

### I5549004 - Sottobosco



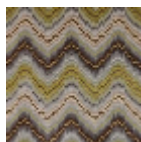
### Fadini Borghi

<b>PERFORMANCE</b>	Martindale > 25 000 T
<b>TYPE</b>	Epinglé velvets
<b>USE</b>	Intensive use
<b>MARTINDALE</b>	60.000 T
<b>COMPOSITION</b>	76 % Linen - 12 % Polyester - 12 % Cotton
<b>SALES UNIT</b>	Available per meter/yard
<b>WIDTH</b>	134 cm / 52,75 inch
<b>REPEAT</b>	H: 33 cm - 12,99 inch V: 56 cm - 22,04 inch Straight repeat
<b>WEIGHT</b>	967 gr / ml
<b>CARE</b>	
<b>CERTIFICATIONS</b>	BS5852 Cigarette test BS5852 Cigarette & match test BS5852 Match test EN1021-1-2 in conjunction with suitable combustion modified foam NFPA 260-Class 1
<b>INFORMATION</b>	pile 100% linen

## 3 Colors



I5549001  
Carmine



I5549003  
Laguna



I5549004  
Sottobosco