

I6517010 VIRGILE

This luxurious plain-weave with a trellis and lattice pattern in covered yarn makes an excellent upholstery fabric.

I6517010 - Grigio blu 10



Laize : 146,00 cm / 57,48 inch

Fadini Borghi

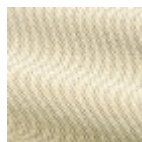
| | |
|--------------------|--|
| PERFORMANCE | High Rub Test |
| TYPE | - |
| USE | Intensive use |
| MARTINDALE | 35.000 T |
| COMPOSITION | 58 % Cotton - 34 % Polyester - 8 % Polyamide |
| SALES UNIT | Available per meter/yard |
| WIDTH | 146 cm / 57,48 inch |
| WEIGHT | 803 gr / ml |
| CARE | |

INFORMATION Reinforced stitching recommended to avoid fraying at seams

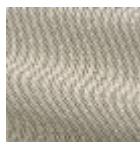
5 Colors



I6517001
Sabbia 01



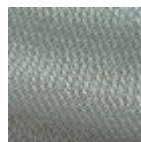
I6517002
Vaniglia 02



I6517003
Duna 03



I6517004
Oro 04



I6517010
Grigio blu 10