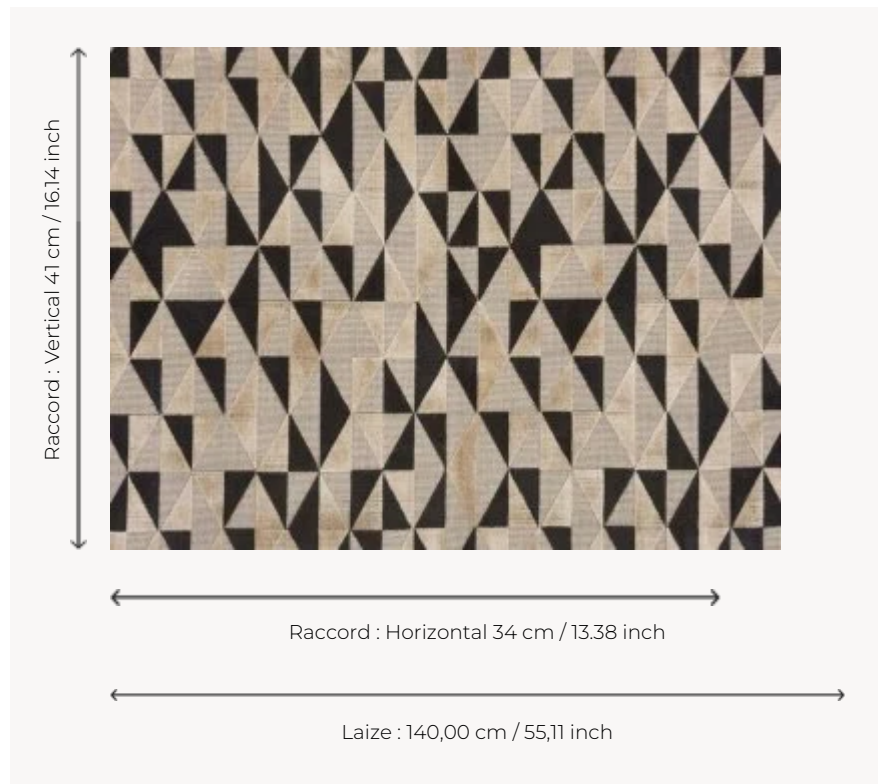


I6575003 ARLINA

A geometric cut velvet, reminiscent of the Pop Art movement of the 50s.

I6575003 - Truffe/dune



Fadini Borghi

| | |
|--------------------|---|
| PERFORMANCE | High Rub Test |
| TYPE | Velvets |
| USE | Normal use |
| MARTINDALE | 40.000 T |
| COMPOSITION | 56 % Viscose - 44 % Cotton |
| SALES UNIT | Available per meter/yard |
| WIDTH | 140 cm / 55,11 inch |
| REPEAT | H: 34 cm - 13,38 inch V: 41 cm - 16,14 inch Straight repeat |
| WEIGHT | 774 gr / ml |
| CARE | |
| INFORMATION | pile 100% viscose |

1 Colors



16575003

Truffe/dune