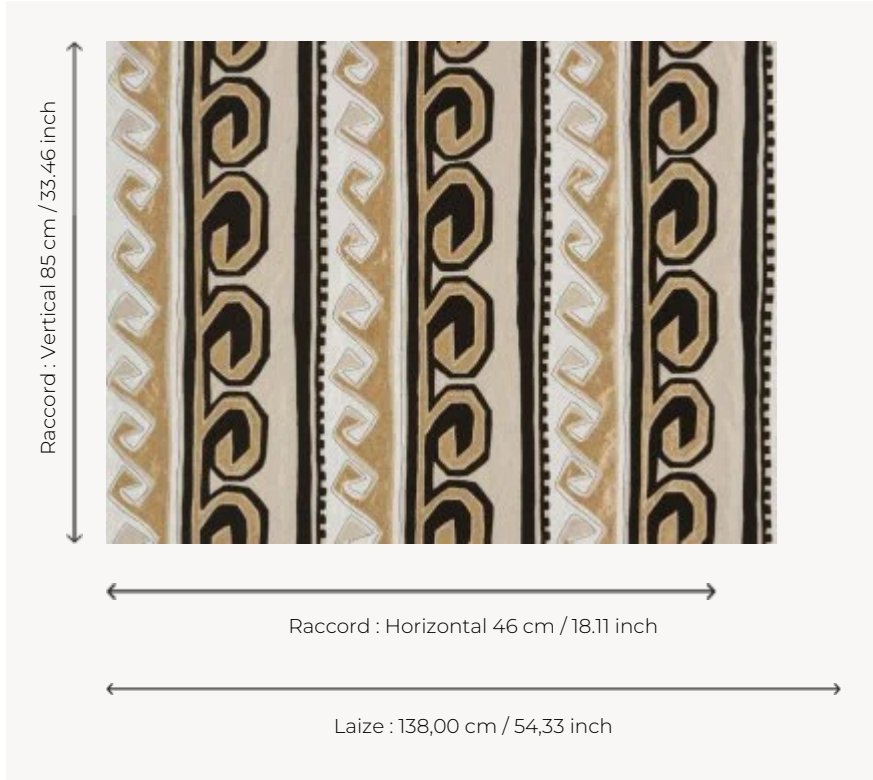


I6583001 EMILIO

Like a Greek frieze, woven and re-embroidered with black wool. A connection between ancient and modern.

I6583001 - Gold



Fadini Borghi

TYPE	-
COMPOSITION	53 % Viscose - 20 % Linen - 19 % Wool - 6 % Silk - 2 % Acrylic
SALES UNIT	Available per meter/yard
WIDTH	138 cm / 54,33 inch
REPEAT	H: 46 cm - 18,11 inch V: 85 cm - 33,46 inch Straight repeat
WEIGHT	575 gr / ml
CARE	
NOTES	Handcrafted embroidery

1 Colors



I6583001

Gold